

Anti-FLOT1 Antibody (9X291)

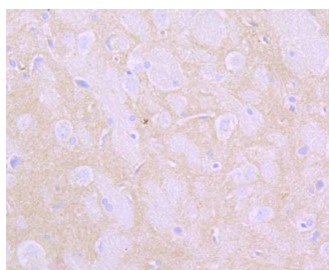
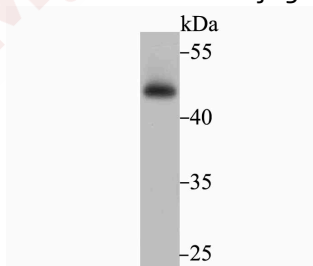
Product Details

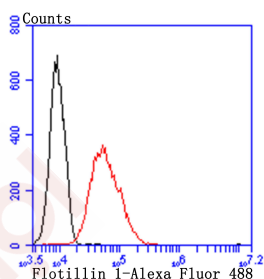
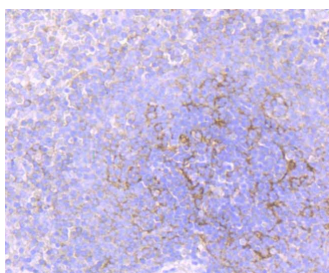
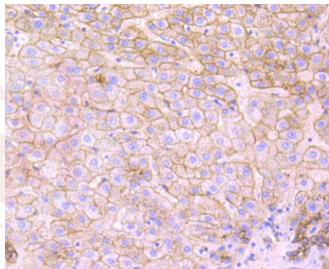
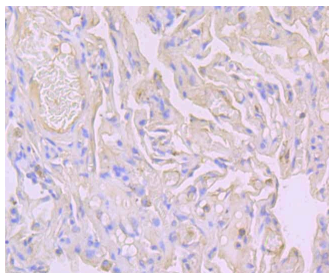
Ig Type:	IgG
Reactivity:	Human,Mouse,Rat
Conjugation:	Unconjugated
Molecular Weight:	Theoretical: 47 kDa.
Clone:	9X291
Purification:	ProA affinity purified

Applications

Verified Activity:

1. Western blot analysis of Flotillin 1 on PC-3M cell lysate using anti-Flotillin 1 antibody at 1/500 dilution.
2. Immunohistochemical analysis of paraffin-embedded rat brain tissue using anti-Flotillin 1 antibody. Counter stained with hematoxylin.
3. Immunohistochemical analysis of paraffin-embedded human lung cancer tissue using anti-Flotillin 1 antibody. Counter stained with hematoxylin.
4. Immunohistochemical analysis of paraffin-embedded human liver tissue using anti-Flotillin 1 antibody. Counter stained with hematoxylin.
5. Immunohistochemical analysis of paraffin-embedded human spleen tissue using anti-Flotillin 1 antibody. Counter stained with hematoxylin.
6. Flow cytometric analysis of HUVEC cells with Flotillin 1 antibody at 1/100 dilution (red) compared with an unlabelled control (cells without incubation with primary antibody; black). Alexa Fluor 488-conjugated goat anti-rabbit IgG was used as the secondary antibody.





Application: FCM,IHC,WB
Recommended WB: 1:500-1000; IHC: 1:50-100; FCM: 1:50-100

Properties

Stability & Storage: Store at -20°C or -80°C for 12 months. Avoid repeated freeze-thaw cycles.

Shipping: Shipping with blue ice.

Antigen Details

Immunogen: Recombinant Protein

Uniprot ID: O75955

Research Background

Lipid rafts are sphingolipid- and cholesterol-rich membrane microdomains that are insoluble in nonionic detergents. Lipid rafts are important for numerous cellular processes, including signal transduction, membrane trafficking and molecular sorting. Flotillins are lipid raft components in neurons and caveolae-associated proteins in A498 kidney cells. Flotillin-1 belongs to the band 7.2/stomatins protein family, whose members are characterized by the presence of a hydrophobic N-terminal region that is predicted to form a single, outside to inside, transmembrane domain. Flotillin-1 and -2 have complementary tissue distributions and their expression levels are

A DRUG SCREENING EXPERT

At the cellular level, Flotillin-2 is ubiquitously expressed, whereas Flotillin-1 is expressed in A498 kidney cells, muscle cell lines and fibroblasts. Flotillins form a ternary complex with CAP and Cbl, directing the localization of the CAP-Cbl complex to a lipid raft subdomain of the plasma membrane. Association of ER-X with Flotillin localizes ER-X within plasma membrane caveolae and mediates rapid oestrogen activation of the MAP kinase cascade. The expression of the flotillins is also correlated to the progression of Alzheimer pathology.

Inhibitor · Natural Compounds · Compound Libraries · Recombinant Proteins

This product is for Research Use Only · Not for Human or Veterinary or Therapeutic Use

Tel:781-999-4286 E_mail:info@targetmol.com Address:34 Washington Street,Wellesley Hills,MA 02481