

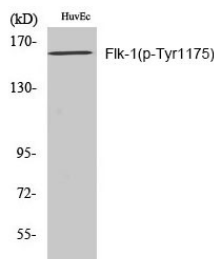
## Anti-Phospho-VEGFR2/KDR (Tyr1175) Polyclonal Antibody 2

## Product Details

Ig Type:	IgG
Reactivity:	Human,Mouse,Rat
Conjugation:	Unconjugated
Molecular Weight:	Actual: 152 kDa.
Purification:	The antibody was affinity-purified from rabbit antiserum by affinity-chromatography using epitope-specific immunogen.

## Applications

Verified Activity: 1. Western Blot analysis of NIH-3T3 cells using Phospho-Flk-1 (Y1175) Polyclonal Antibody.



Application:	ELISA,IHC,WB
Recommended	WB: 1:500-2000; IHC: 1:100-300; ELISA: 1:10000

## Properties

Stability & Storage:	Store at -20°C or -80°C for 12 months. Avoid repeated freeze-thaw cycles.
Shipping:	Shipping with blue ice.

## Antigen Details

Immunogen:	A synthesized phosphopeptide: human Flk-1 around the phosphorylation site of Y1175
Antigen Species:	human
Uniprot ID:	P35968
Synonyms:	p-VEGFR2/KDR (Y1175); VEGFR2/KDR (p-Tyr1175); p-VEGFR2/KDR (Tyr1175); VEGFR2/KDR (p-Y1175)

**Inhibitor · Natural Compounds · Compound Libraries · Recombinant Proteins**

This product is for Research Use Only. Not for Human or Veterinary or Therapeutic Use

Tel:781-999-4286 E\_mail:info@targetmol.com Address:34 Washington Street,Wellesley Hills,MA 02481