

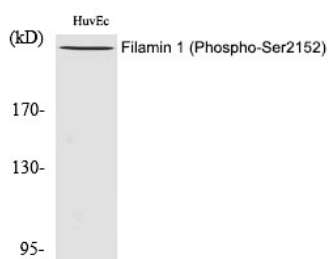
Anti-Phospho-Filamin-A (Ser2152) Polyclonal Antibody

Product Details

Ig Type:	IgG
Reactivity:	Human,Mouse,Rat,Monkey
Conjugation:	Unconjugated
Molecular Weight:	Actual: 280 kDa.
Purification:	The antibody was affinity-purified from rabbit antiserum by affinity-chromatography using epitope-specific immunogen.

Applications

Verified Activity: 1. Western Blot analysis of HuvEc cells using Phospho-Filamin 1 (S2152) Polyclonal Antibody.



Application: ELISA,IHC,WB
Recommended WB: 1:500-2000; IHC: 1:100-300; ELISA: 1:10000

Properties

Stability & Storage: Store at -20°C or -80°C for 12 months. Avoid repeated freeze-thaw cycles.
Shipping: Shipping with blue ice.

Antigen Details

Immunogen: A synthesized phosphopeptide: human Filamin 1 around the phosphorylation site of S2152
Antigen Species: human
Uniprot ID: P21333
Synonyms: Filamin-A (p-S2152);p-Filamin-A (Ser2152);p-Filamin-A (S2152);Filamin-A (p-Ser2152)

Inhibitor · Natural Compounds · Compound Libraries · Recombinant Proteins

This product is for Research Use Only. Not for Human or Veterinary or Therapeutic Use

Tel:781-999-4286 E_mail:info@targetmol.com Address:34 Washington Street,Wellesley Hills,MA 02481