

Anti-Fibrinogen Gamma Chain Antibody (1N94)

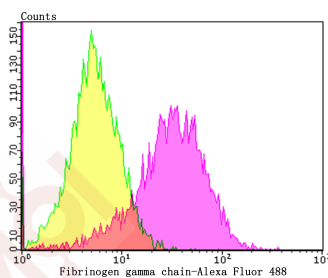
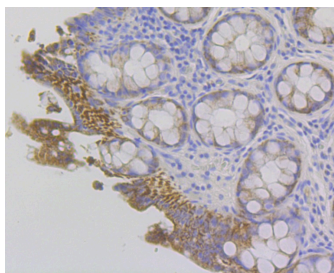
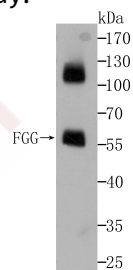
Product Details

Ig Type:	IgG
Reactivity:	Human
Conjugation:	Unconjugated
Molecular Weight:	Theoretical: 52 kDa.
Clone:	1N94
Purification:	ProA affinity purified

Applications

Verified Activity:

1. Western blot analysis of Fibrinogen gamma chain on human plasma using anti-Fibrinogen gamma chain at 1/5,000 dilution.
2. Immunohistochemical analysis of paraffin-embedded human colon tissue using anti-Fibrinogen gamma chain antibody. Counter stained with hematoxylin.
3. Flow cytometric analysis of HepG2 cells with Fibrinogen gamma chain antibody at 1/50 dilution (purple) compared with an unlabelled control (cells without incubation with primary antibody; yellow). Alexa Fluor 488-conjugated goat anti-rabbit IgG was used as the secondary antibody.



Application:	FCM,IHC,WB
Recommended	WB: 1:5000-10000; IHC: 1:50-200; FCM: 1:50-100

Properties

Stability & Storage: Store at -20°C or -80°C for 12 months. Avoid repeated freeze-thaw cycles.

Shipping: Shipping with blue ice.

Antigen Details

Uniprot ID: P02679

Synonyms: fibrinogen γ chain; fibrinogen gamma chain

Research Background

Together with fibrinogen alpha (FGA) and fibrinogen beta (FGB), polymerizes to form an insoluble fibrin matrix. Has a major function in hemostasis as one of the primary components of blood clots. In addition, functions during the early stages of wound repair to stabilize the lesion and guide cell migration during re-epithelialization. Was originally thought to be essential for platelet aggregation, based on in vitro studies using anticoagulated blood. However, subsequent studies have shown that it is not absolutely required for thrombus formation in vivo. Enhances expression of SELP in activated platelets via an ITGB3-dependent pathway. Maternal fibrinogen is essential for successful pregnancy. Fibrin deposition is also associated with infection, where it protects against IFNG-mediated hemorrhage. May also facilitate the antibacterial immune response via both innate and T-cell mediated pathways.

Inhibitor · Natural Compounds · Compound Libraries · Recombinant Proteins

This product is for Research Use Only · Not for Human or Veterinary or Therapeutic Use

Tel: 781-999-4286 E_mail: info@targetmol.com Address: 34 Washington Street, Wellesley Hills, MA 02481
