

## Anti-FGFR1 Antibody (9Z597)

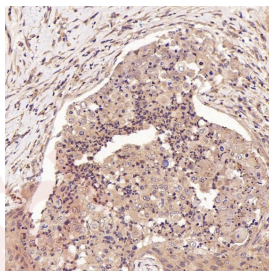
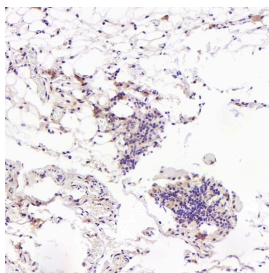
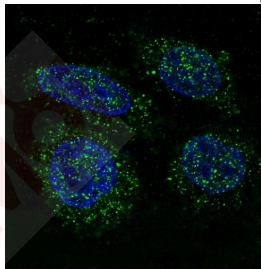
### Product Details

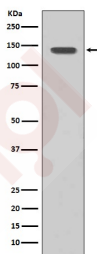
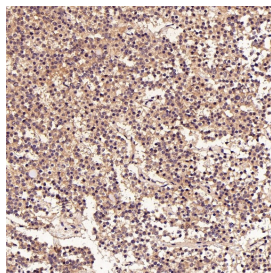
Ig Type:	IgG
Reactivity:	Human
Conjugation:	Unconjugated
Molecular Weight:	Actual: 120, 140 kDa.
Clone:	9Z597
Purification:	Affinity-chromatography

### Applications

#### Verified Activity:

1. Immunofluorescent analysis of HeLa cells, using FGFR1 Antibody.
2. Immunohistochemical analysis of paraffin-embedded Rat pancreas, using the Antibody at 1:50 dilution.
3. Immunohistochemical analysis of paraffin-embedded Human thymoma, using the Antibody at 1:50 dilution.
4. Immunohistochemical analysis of paraffin-embedded Human pituitary tumor, using the Antibody at 1:50 dilution.
5. Western blot analysis of FGFR1 expression in SH-SY5Y cell lysate.





Application: ICC/IF,IHC,WB

Recommended WB: 1:1000-2000; IHC: 1:50-100; ICC/IF: 1:50-200

### Properties

Stability & Storage: Store at 2°C-8°C for 1 month. Store at -20°C or -80°C for 12 months. Avoid repeated freeze-thaw cycles.

Shipping: Shipping with blue ice.

### Antigen Details

Immunogen: A synthesized peptide: human FGFR1

Antigen Species: human

Uniprot ID: P11362

Synonyms: FGFR1  $\beta$  (IIIC);FLT-2;bFGF-R-1;BFGFR;N-sam;CD331;FGFR-1

### Research Background

Tyrosine-protein kinase that acts as a cell-surface receptor for fibroblast growth factors and plays an essential role in the regulation of embryonic development, cell proliferation, differentiation and migration.

**Inhibitor · Natural Compounds · Compound Libraries · Recombinant Proteins**

This product is for Research Use Only · Not for Human or Veterinary or Therapeutic Use

Tel:781-999-4286 E\_mail:info@targetmol.com Address:34 Washington Street,Wellesley Hills,MA 02481