

Anti-Fc epsilon RI Antibody (5H603)

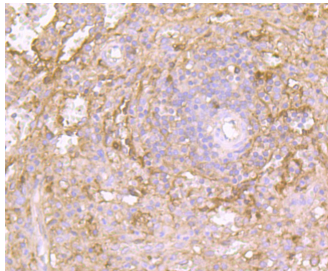
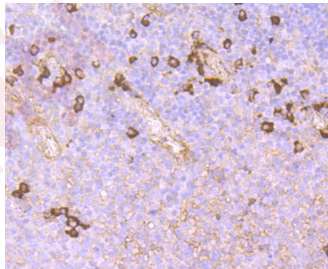
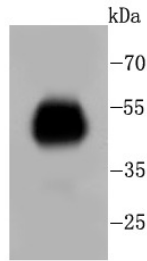
Product Details

Conjugation: Unconjugated
Molecular Weight: Theoretical: 50 kDa.
Clone: 5H603

Applications

Verified Activity:

1. Western blot analysis of FC on human plasma lysates using anti-FC antibody at 1/500 dilution.
2. Immunohistochemical analysis of paraffin-embedded human tonsil tissue using anti-FC antibody. Counter stained with hematoxylin.
3. Immunohistochemical analysis of paraffin-embedded human spleen tissue using anti-FC antibody. Counter stained with hematoxylin.



Application: IHC, WB
Recommended WB: 1:1000-5000; IHC: 1:50-200

Properties

Stability & Storage: Store at -20°C or -80°C for 12 months. Avoid repeated freeze-thaw cycles.

Shipping: Shipping with blue ice.

Antigen Details

Immunogen: Recombinant Protein

Uniprot ID: P12319

Synonyms: alpha polypeptide;Fc fragment of IgE, high affinity I, receptor for;α polypeptide;FcERI;Fc ε RI; FCE1A

Research Background

The fundamental structure of IgG contains two identical heavy chains of about 50 kDa and two identical light chains of about 25 kDa, thus tetrameric quaternary structure. Light chain, which is usually same in a natural IgG molecule, includes κ chain and λ chain, but κ or λ antibody can exist in one body simultaneously. A heavy chain includes Fab- and Fc-Fragments. This antibody can recognize human IgG Fc fragments of heavy chains,

Inhibitor · Natural Compounds · Compound Libraries · Recombinant Proteins

This product is for Research Use Only · Not for Human or Veterinary or Therapeutic Use

Tel:781-999-4286 E_mail:info@targetmol.com Address:34 Washington Street,Wellesley Hills,MA 02481