

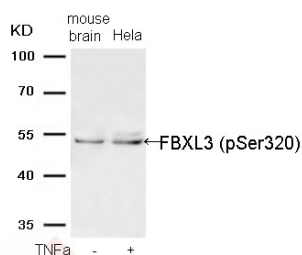
Anti-Phospho-FBXL3 (Ser320) Polyclonal Antibody

Product Details

Ig Type:	IgG
Reactivity:	Human,Mouse,Rat
Conjugation:	Unconjugated
Molecular Weight:	Actual: 49 kDa.
Purification:	Antibodies were produced by immunizing rabbits with synthetic phosphopeptide and KLH conjugates. Antibodies were purified by affinity-chromatography using epitope-specific phosphopeptide. Non-phospho specific antibodies were removed by chromatography using non-phosphopeptide.

Applications

Verified Activity: 1. Western blot analysis of extracts from Hela cells treated with TNF α (lane 2) and mouse brain tissue (lane 1) using FBXL3 (Phospho-Ser320) Antibody TMAC-01452.



Application:	WB
Recommended	WB: 1:500-1000

Properties

Stability & Storage:	Store at -20°C or -80°C for 12 months. Avoid repeated freeze-thaw cycles.
Shipping:	Shipping with blue ice.

Antigen Details

Immunogen:	Peptide sequence around phosphorylation site of serine 320 (S-V-S(p)-K-D) derived from Human FBXL3
Antigen Species:	human
Uniprot ID:	Q9UKT7
Synonyms:	p-FBXL3 (S320);FBXL3 (p-Ser320);p-FBXL3 (Ser320);FBXL3 (p-S320)

Research Background

Substrate-recognition component of the SCF(FBXL3) E3 ubiquitin ligase complex involved in circadian rhythm function. Plays a key role in the maintenance of both the speed and the robustness of the circadian clock oscillation. The SCF(FBXL3) complex mainly acts in the nucleus and mediates ubiquitination and subsequent degradation of CRY1 and CRY2. Activity of the SCF(FBXL3) complex is counteracted by the SCF(FBXL21) complex.

Inhibitor · Natural Compounds · Compound Libraries · Recombinant Proteins

This product is for Research Use Only · Not for Human or Veterinary or Therapeutic Use

Tel:781-999-4286 E_mail:info@targetmol.com Address:34 Washington Street,Wellesley Hills,MA 02481