

Anti-FSCN1 Antibody (7Z181)

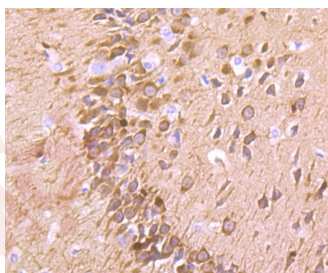
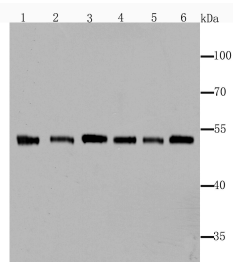
Product Details

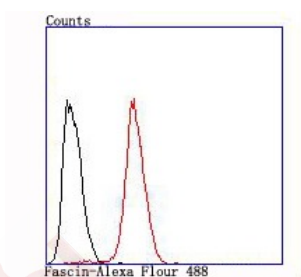
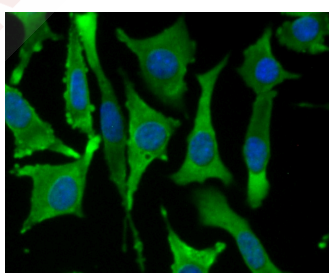
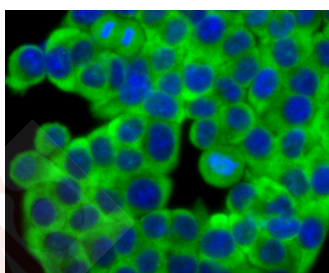
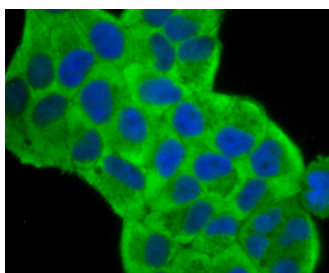
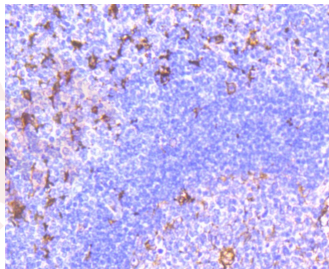
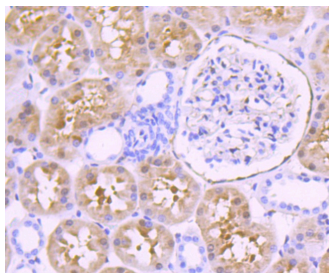
Ig Type:	IgG
Reactivity:	Human,Mouse,Rat
Conjugation:	Unconjugated
Molecular Weight:	Theoretical: 54 kDa.
Clone:	7Z181
Purification:	ProA affinity purified

Applications

Verified Activity:

1. Western blot analysis of Fascin on different lysates using anti-Fascin antibody at 1/1,000 dilution. Positive control: Lane1: SH-SY5Y, Lane2: Human brain, Lane3: Rat spleen, Lane4: Mouse testes, Lane5: Mouse brain, Lane6: Mouse spleen.
2. Immunohistochemical analysis of paraffin-embedded rat brain tissue using anti-Fascin antibody. Counter stained with hematoxylin.
3. Immunohistochemical analysis of paraffin-embedded human kidney tissue using anti-Fascin antibody. Counter stained with hematoxylin.
4. Immunohistochemical analysis of paraffin-embedded human tonsil tissue using anti-Fascin antibody. Counter stained with hematoxylin.
5. ICC staining Fascin in Hela cells (green). The nuclear counter stain is DAPI (blue). Cells were fixed in paraformaldehyde, permeabilised with 0.25% Triton X100/PBS.
6. ICC staining Fascin in SW480 cells (green). The nuclear counter stain is DAPI (blue). Cells were fixed in paraformaldehyde, permeabilised with 0.25% Triton X100/PBS.
7. ICC staining Fascin in SH-SY5Y cells (green). The nuclear counter stain is DAPI (blue). Cells were fixed in paraformaldehyde, permeabilised with 0.25% Triton X100/PBS.
8. Flow cytometric analysis of Hela cells with Fascin antibody at 1/100 dilution (red) compared with an unlabelled control (cells without incubation with primary antibody; black).





Application: FCM, ICC/IF, IHC, IP, WB

Recommended WB: 1:500-1000; IHC: 1:50-200; ICC/IF: 1:50-200; FCM: 1:50-100

Properties

Stability & Storage: Store at -20°C or -80°C for 12 months. Avoid repeated freeze-thaw cycles.

Shipping: Shipping with blue ice.

Antigen Details

Immunogen: Recombinant Protein

Uniprot ID: Q16658

Synonyms: Fascin;Strongylocentrotus purpuratus;sea urchin;Singed;FAN 1;Singed (Drosophila) like (sea urchin fascin homolog like);FSCN 1;55 kDa actin bundling protein;55 kDa actin-bundling protein;p55;HSN;Fascin 1;FLJ38511;FAN1;Fascin1;Fascin actin bundling protein 1;Fascin homolog 1;Singed drosophila homolog like;SNL;Fascin homolog 1 actin bundling protein

Research Background

Cell adhesion to extracellular matrix is an important physiological stimulus for organization of the Actin-based cytoskeleton. Adhesion to the matrix glycoprotein Thrombospondin 1 triggers the sustained formation of F-Actin microspikes that contain the Actin-bundling protein Fascin. These structures are also implicated in cell migration, which may be an important function of Thrombospondin 1 in tissue remodelling and wound repair. Fascin bundles Actin microfilaments within dynamic cellular structures such as microspikes, stress fibers and membrane ruffles. Fascin could serve as a prognostic factor for abnormal ovarian epithelial pathology and could be a novel target for the treatment of ovarian cancer. Fascin, an Actin-bundling protein, identifies dendritic cells in the blood and in tissues.

Inhibitor · Natural Compounds · Compound Libraries · Recombinant Proteins

This product is for Research Use Only · Not for Human or Veterinary or Therapeutic Use

Tel:781-999-4286 E_mail:info@targetmol.com Address:34 Washington Street,Wellesley Hills,MA 02481