

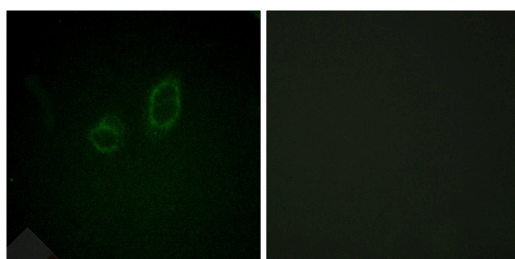
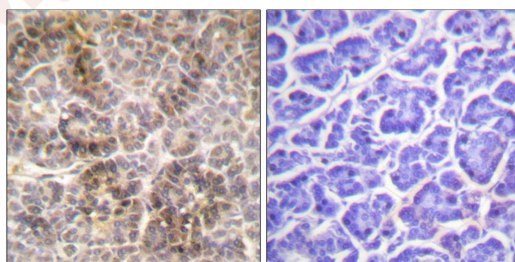
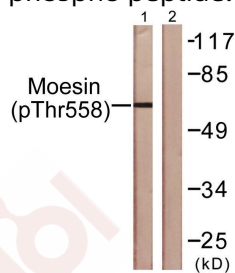
Anti-Phospho-Ezrin/Radixin/Moesin (Thr567/564/558) Polyclonal Antibody

Product Details

Ig Type:	IgG
Reactivity:	Human,Mouse,Rat
Conjugation:	Unconjugated
Molecular Weight:	Theoretical: 67 kDa.
Purification:	The antibody was affinity-purified from rabbit antiserum by affinity-chromatography using epitope-specific immunogen.

Applications

- Verified Activity:
1. Western blot analysis of lysates from NIH/3T3 cells. The lane on the right is blocked with the phospho peptide.
 2. Immunohistochemistry analysis of paraffin-embedded human pancreas. The picture on the right is blocked with the phospho peptide.
 3. Immunofluorescence analysis of A549 cells. The picture on the right is blocked with the phospho peptide.



Application: IF,IHC,WB

Recommended WB: 1:500-2000; IHC: 1:100-300; IF: 1:200-1000

A DRUG SCREENING EXPERT

Properties

Stability & Storage: Store at -20°C or -80°C for 12 months. Avoid repeated freeze-thaw cycles.

Shipping: Shipping with blue ice.

Antigen Details

Immunogen: A synthesized phosphopeptide: human Moesin/Ezrin/Radixin around the phosphorylation site of Thr558

Antigen Species: Human

Synonyms: p-Ezrin/Radixin/Moesin (T567/564/558);p-Ezrin/Radixin/Moesin (Thr567/564/558);
Ezrin/Radixin/Moesin (p-T567/564/558);Ezrin/Radixin/Moesin (p-Thr567/564/558)

Inhibitor · Natural Compounds · Compound Libraries · Recombinant Proteins

This product is for Research Use Only · Not for Human or Veterinary or Therapeutic Use

Tel:781-999-4286 E_mail:info@targetmol.com Address:34 Washington Street,Wellesley Hills,MA 02481
