

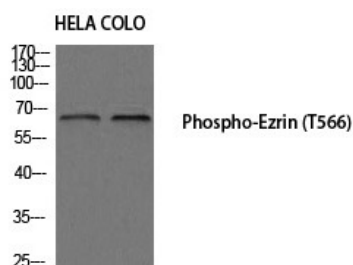
## Anti-Phospho-Ezrin (Thr566) Polyclonal Antibody

## Product Details

Ig Type:	IgG
Reactivity:	Human,Mouse,Rat
Conjugation:	Unconjugated
Molecular Weight:	Actual: 69 kDa.
Purification:	The antibody was affinity-purified from rabbit antiserum by affinity-chromatography using epitope-specific immunogen.

## Applications

Verified Activity: 1. Western blot analysis of HELA COLO using Phospho-Ezrin (T566) antibody.



Application: ELISA,WB  
Recommended WB: 1:500-2000; ELISA: 1:20000

## Properties

Stability & Storage: Store at -20°C or -80°C for 12 months. Avoid repeated freeze-thaw cycles.  
Shipping: Shipping with blue ice.

## Antigen Details

Immunogen: A synthesized phosphopeptide: human Ezrin around the phosphorylation site of T566  
Antigen Species: human  
Uniprot ID: P15311  
Synonyms: Ezrin (p-Thr566);p-Ezrin (T566);p-Ezrin (Thr566);Ezrin (p-T566)

Inhibitor · Natural Compounds · Compound Libraries · Recombinant Proteins

This product is for Research Use Only. Not for Human or Veterinary or Therapeutic Use

Tel:781-999-4286 E\_mail:info@targetmol.com Address:34 Washington Street,Wellesley Hills,MA 02481