

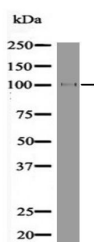
Anti-Phospho-EZH2 (Thr367) Polyclonal Antibody

Product Details

Ig Type: IgG
Reactivity: Human,Mouse,Rat
Conjugation: Unconjugated
Molecular Weight: Theoretical: 98 kDa.

Applications

Verified Activity: 1. Western blot analysis Ezh2 (Phospho-Thr367) using PMA treated HeLa whole cell lysates.



Application: WB
Recommended WB: 1:1000

Properties

Stability & Storage: Store at -20°C or -80°C for 12 months. Avoid repeated freeze-thaw cycles.
Shipping: Shipping with blue ice.

Antigen Details

Immunogen: A synthesized phosphopeptide: human Ezh2 around the phosphorylation site of Thr367
Antigen Species: human
Uniprot ID: Q15910
Synonyms: p-EZH2 (T367);EZH2 (p-Thr367);EZH2 (p-T367);p-EZH2 (Thr367)

Inhibitor · Natural Compounds · Compound Libraries · Recombinant Proteins

This product is for Research Use Only. Not for Human or Veterinary or Therapeutic Use

Tel:781-999-4286 E_mail:info@targetmol.com Address:34 Washington Street,Wellesley Hills,MA 02481