

Anti-Exportin-5 Antibody (6J749)

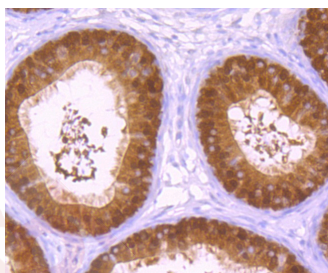
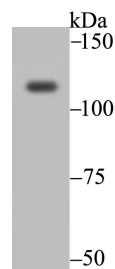
Product Details

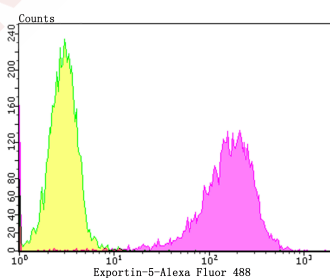
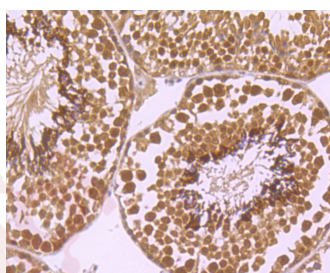
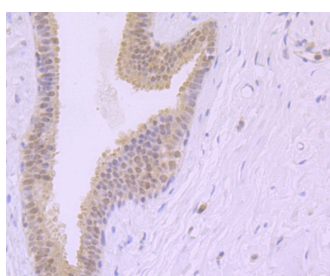
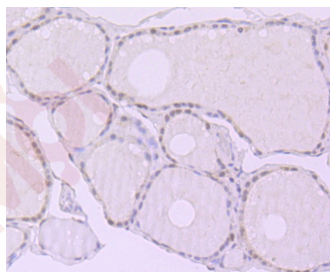
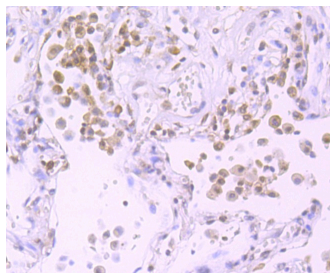
Ig Type:	IgG
Reactivity:	Human,Mouse,Rat
Conjugation:	Unconjugated
Molecular Weight:	Theoretical: 136 kDa.
Clone:	6J749
Purification:	ProA affinity purified

Applications

Verified Activity:

1. Western blot analysis of Exportin-5 on 293 cell using anti-Exportin-5 antibody at 1/2,000 dilution.
2. Immunohistochemical analysis of paraffin-embedded rat epididymis tissue using anti-Exportin-5 antibody. Counter stained with hematoxylin.
3. Immunohistochemical analysis of paraffin-embedded human lung cancer tissue using anti-Exportin-5 antibody. Counter stained with hematoxylin.
4. Immunohistochemical analysis of paraffin-embedded human thyroid gland tissue using anti-Exportin-5 antibody. Counter stained with hematoxylin.
5. Immunohistochemical analysis of paraffin-embedded human breast tissue using anti-Exportin-5 antibody. Counter stained with hematoxylin.
6. Immunohistochemical analysis of paraffin-embedded mouse testis tissue using anti-Exportin-5 antibody. Counter stained with hematoxylin.
7. Flow cytometric analysis of K562 cells with Exportin-5 antibody at 1/100 dilution (purple) compared with an unlabelled control (cells without incubation with primary antibody; yellow). Alexa Fluor 488-conjugated goat anti-rabbit IgG was used as the secondary antibody.





Application: FCM, ICC/IF, IHC, WB

Recommended WB: 1:500-2000; IHC: 1:100-400; ICC/IF: 1:100; FCM: 1:50-100

Properties

Stability & Storage: Store at -20°C or -80°C for 12 months. Avoid repeated freeze-thaw cycles.

Shipping: Shipping with blue ice.

Antigen Details

Immunogen: Recombinant Protein: human Exportin-5 aa 1-200
Antigen Species: Human
Uniprot ID: Q9HAV4
Exp 5;FLJ14239;FLJ45606;Exp5;Ran-binding protein 21;Ran binding protein 21;Exportin5;Xpo 5;
Synonyms: xpo5;Ranbp 21;OTTHUMP00000016472;XPO5_HUMAN;Ranbp21;Exportin 5;KIAA1291;Exportin-5;FLJ32057

Research Background

The karyopherin-related nuclear transport factor Exportin 5, also known as Exp5, preferentially recognizes and transports RNAs containing minihelix motifs, structural cis-acting export elements that comprise a double-stranded stem (14 nucleotides) with a base-paired 5' end and a 3-8-nucleotide protruding 3' end. Exportin 5 also mediates protein transport between the nuclear and cytoplasmic compartment. Exportin 5 belongs to a large family of karyopherins and stimulates nuclear export of dsRNA binding proteins eEF1A and tRNA.

Inhibitor · Natural Compounds · Compound Libraries · Recombinant Proteins

This product is for Research Use Only · Not for Human or Veterinary or Therapeutic Use

Tel:781-999-4286 E_mail:info@targetmol.com Address:34 Washington Street,Wellesley Hills,MA 02481