

## Anti-Phospho-ETS1 (Thr38) Polyclonal Antibody

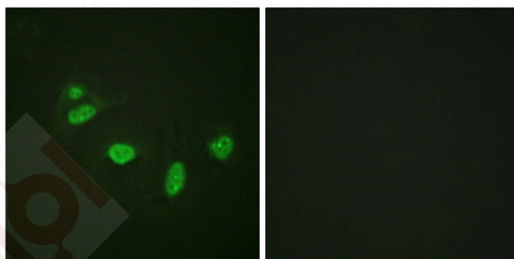
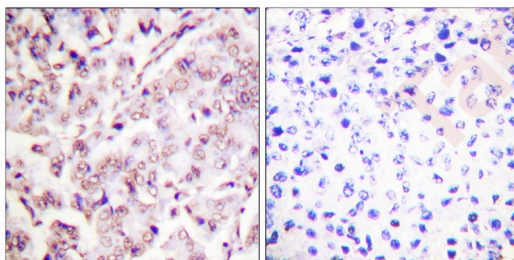
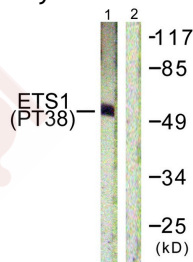
### Product Details

Ig Type:	IgG
Reactivity:	Human,Mouse
Conjugation:	Unconjugated
Molecular Weight:	Actual: 54 kDa.
Purification:	Antibodies were produced by immunizing rabbits with synthetic phosphopeptide and KLH conjugates. Antibodies were purified by affinity-chromatography using epitope-specific phosphopeptide. Non-phospho specific antibodies were removed by chromatography using non-phosphopeptide.

### Applications

#### Verified Activity:

1. Western blot analysis of extracts from HepG2 cells using ETS1 (Phospho-Thr38) Antibody TMAC-01400. The lane on the right is treated with the antigen-specific peptide.
2. Immunohistochemical analysis of paraffin-embedded human breast carcinoma tissue, using ETS1 (Phospho-Thr38) antibody TMAC-01400 (left) or the same antibody preincubated with blocking peptide (right).
3. Immunofluorescence staining of methanol-fixed HeLa cells using ETS1 (Phospho-Thr38) Antibody TMAC-01400.



Application:	IF,IHC,WB
Recommended	WB: 1:500-1000; IHC: 1:50-100; IF: 1:100-200

### Properties

Stability & Storage: Store at -20°C or -80°C for 12 months. Avoid repeated freeze-thaw cycles.

Shipping: Shipping with blue ice.

---

### Antigen Details

Immunogen: Peptide sequence around phosphorylation site of threonine 38(L-L-T(p)-P-S) derived from Human ETS1

Antigen Species: Human

Uniprot ID: P27577

Synonyms: p-ETS1 (Thr38);ETS1 (p-T38);ETS1 (p-Thr38);p-ETS1 (T38)

---

### Research Background

Transcription factor. Directly controls the expression of cytokine and chemokine genes in a wide variety of different cellular contexts. May control the differentiation, survival and proliferation of lymphoid cells. May also regulate angiogenesis through regulation of expression of genes controlling endothelial cell migration and invasion.

**Inhibitor · Natural Compounds · Compound Libraries · Recombinant Proteins**

This product is for Research Use Only · Not for Human or Veterinary or Therapeutic Use

Tel:781-999-4286 E\_mail:info@targetmol.com Address:34 Washington Street,Wellesley Hills,MA 02481