

Anti-ERR1 Antibody (5B243)

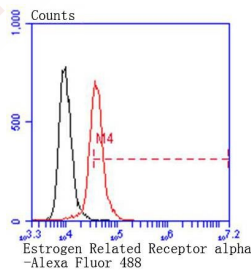
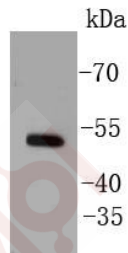
Product Details

Ig Type:	IgG
Reactivity:	Human,Mouse,Rat
Conjugation:	Unconjugated
Molecular Weight:	Theoretical: 53 kDa.
Clone:	5B243
Purification:	ProA affinity purified

Applications

Verified Activity:

1. Western blot analysis of Estrogen Related Receptor alpha on MCF-7 cell lysates using anti-Estrogen Related Receptor alpha antibody at 1/1,000 dilution.
2. Flow cytometric analysis of Hela cells with Estrogen Related Receptor alpha antibody at 1/50 dilution (red) compared with an unlabelled control (cells without incubation with primary antibody; black). Alexa Fluor 488-conjugated goat anti rabbit IgG was used as the secondary antibody.



Application: FCM,IP,WB

Recommended WB: 1:1000-2000; FCM: 1:50-100

Properties

Stability & Storage: Store at -20°C or -80°C for 12 months. Avoid repeated freeze-thaw cycles.

Shipping: Shipping with blue ice.

Antigen Details

Immunogen:	Recombinant Protein
Uniprot ID:	P11474
Synonyms:	ERR1;ESRL1;Nuclear receptor subfamily 3 group B member 1;Steroid hormone receptor ERR1; Estrogen receptor-like 1;ESRRA;NR3B1;Estrogen-related receptor alpha (ERR-alpha)

Research Background

Estrogen related receptor alpha (ERR α) is a nuclear receptor in the superfamily of ligand-regulated transcription factors and is a member of the NR3B orphan nuclear receptor subgroup (consisting of α , β and γ). ERR α plays a role in modulating the estrogen signaling pathway. In addition, the expression of ERR α has been shown to increase during fasting and cold exposure. ERR α may be important for regulating mitochondrial biogenesis and oxidative metabolism by acting directly on genes necessary for mitochondrial function. Mice lacking ERR α are unable to maintain their body temperature in the cold. ERR α may also be involved in the maintenance and formation of cartilage. This information could be useful in finding therapeutic agents for a variety of diseases affecting the joints.

Inhibitor · Natural Compounds · Compound Libraries · Recombinant Proteins

This product is for Research Use Only · Not for Human or Veterinary or Therapeutic Use

Tel:781-999-4286 E_mail:info@targetmol.com Address:34 Washington Street,Wellesley Hills,MA 02481