

Anti-Phospho-ER alpha (Ser167) Polyclonal Antibody

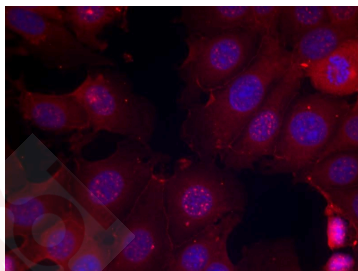
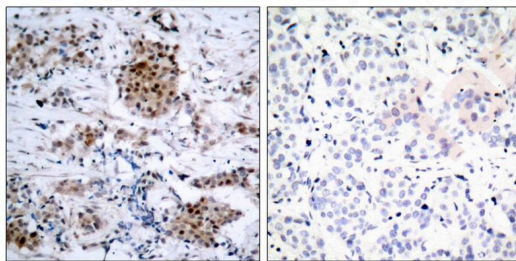
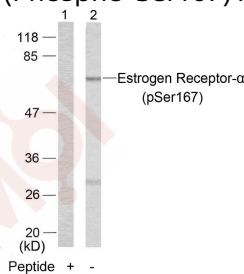
Product Details

Ig Type:	IgG
Reactivity:	Human
Conjugation:	Unconjugated
Purification:	Antibodies were produced by immunizing rabbits with synthetic phosphopeptide and KLH conjugates. Antibodies were purified by affinity-chromatography using epitope-specific phosphopeptide. Non-phospho specific antibodies were removed by chromatography using non-phosphopeptide.

Applications

Verified Activity:

- Western blot analysis of extracts from MCF7 cells using Estrogen Receptor- α (Phospho-Ser167) Antibody TMAC-01392 (Lane 2) and the same antibody preincubated with blocking peptide (Lane1).
- Immunohistochemical analysis of paraffin-embedded human breast carcinoma tissue using Estrogen Receptor- α (Phospho-Ser167) Antibody TMAC-01392 (left) or the same antibody preincubated with blocking peptide (right).
- Immunofluorescence staining of methanol-fixed MCF cells using Estrogen Receptor- α (Phospho-Ser167) Antibody TMAC-01392.



Application: IF,IHC,WB

Properties

Stability & Storage: Store at 2°C-8°C for 1 month. Store at -20°C or -80°C for 12 months. Avoid repeated freeze-thaw cycles.

Shipping: Shipping with blue ice.

Antigen Details

Immunogen: Peptide sequence around phosphorylation site of serine 167 (L-A-S(p)-T-N) derived from Human Estrogen Receptor- α

Antigen Species: human

Uniprot ID: P03372

Synonyms: p-ER α (Ser167);p-ER α (S167);ER α (p-Ser167);ER α (p-S167)

Research Background

Nuclear hormone receptor. The steroid hormones and their receptors are involved in the regulation of eukaryotic gene expression and affect cellular proliferation and differentiation in target tissues.

Inhibitor · Natural Compounds · Compound Libraries · Recombinant Proteins

This product is for Research Use Only · Not for Human or Veterinary or Therapeutic Use

Tel:781-999-4286 E_mail:info@targetmol.com Address:34 Washington Street,Wellesley Hills,MA 02481