

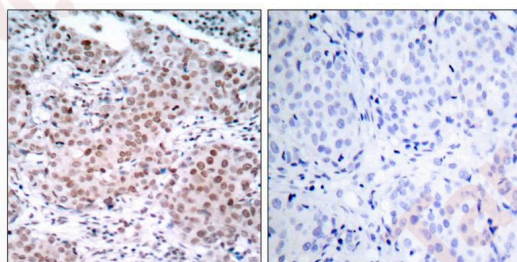
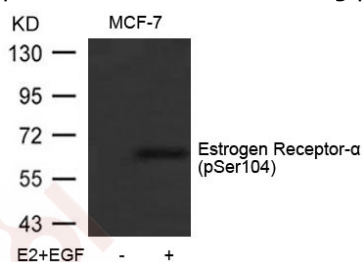
## Anti-Phospho-ER alpha (Ser104) Polyclonal Antibody

### Product Details

Ig Type:	IgG
Reactivity:	Human
Conjugation:	Unconjugated
Purification:	Antibodies were produced by immunizing rabbits with synthetic phosphopeptide and KLH conjugates. Antibodies were purified by affinity-chromatography using epitope-specific phosphopeptide. Non-phospho specific antibodies were removed by chromatography using non-phosphopeptide.

### Applications

- Verified Activity:
- Western blot analysis of extracts from MCF-7 cells untreated or treated with E2 and EGF using Estrogen Receptor- $\alpha$  (Phospho-Ser104) Antibody TMAC-01389.
  - Immunohistochemical analysis of paraffin-embedded human breast carcinoma tissue using Estrogen Receptor- $\alpha$  (Phospho-Ser104) Antibody TMAC-01389 (left) or the same antibody preincubated with blocking peptide (right).



Application: IHC,WB

### Properties

Stability & Storage:	Store at 2°C-8°C for 1 month. Store at -20°C or -80°C for 12 months. Avoid repeated freeze-thaw cycles.
Shipping:	Shipping with blue ice.

### Antigen Details

Immunogen: Peptide sequence around phosphorylation site of serine 104 (S-V-S(p)-P-S) derived from Human Estrogen Receptor- $\alpha$

Antigen Species: human

Uniprot ID: P03372

Synonyms: p-ER  $\alpha$  (S104);ER  $\alpha$  (p-Ser104);ER  $\alpha$  (p-S104);p-ER  $\alpha$  (Ser104)

---

### Research Background

Nuclear hormone receptor. The steroid hormones and their receptors are involved in the regulation of eukaryotic gene expression and affect cellular proliferation and differentiation in target tissues.

**Inhibitor · Natural Compounds · Compound Libraries · Recombinant Proteins**

This product is for Research Use Only · Not for Human or Veterinary or Therapeutic Use

Tel:781-999-4286 E\_mail:info@targetmol.com Address:34 Washington Street,Wellesley Hills,MA 02481