

## Anti-TFF1 Antibody (6D947)

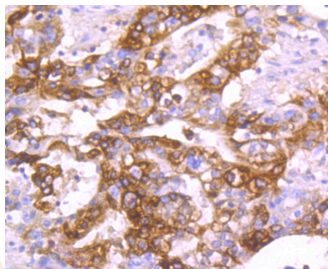
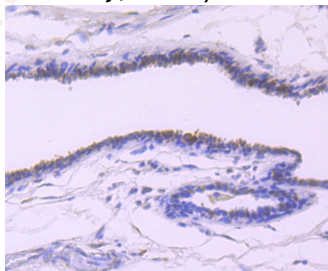
### Product Details

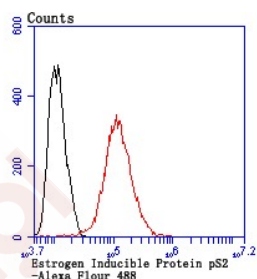
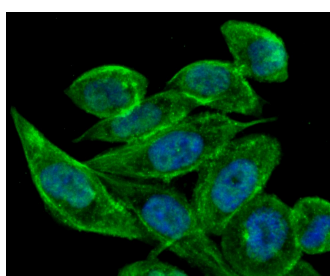
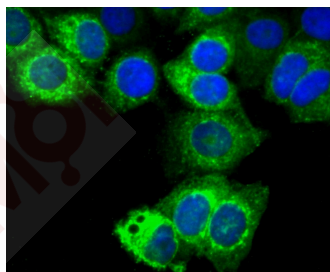
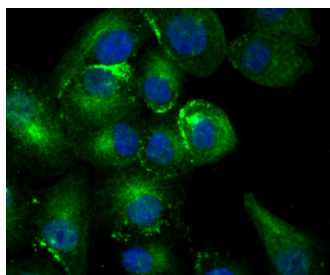
Ig Type:	IgG
Reactivity:	Human
Conjugation:	Unconjugated
Clone:	6D947
Purification:	ProA affinity purified

### Applications

#### Verified Activity:

1. Immunohistochemical analysis of paraffin-embedded human breast cancer tissue using anti-Estrogen Inducible Protein pS2 antibody. Counter stained with hematoxylin.
2. Immunohistochemical analysis of paraffin-embedded human stomach cancer tissue using anti-Estrogen Inducible Protein pS2 antibody. Counter stained with hematoxylin.
3. ICC staining Estrogen Inducible Protein pS2 in A549 cells (green). The nuclear counter stain is DAPI (blue). Cells were fixed in paraformaldehyde, permeabilised with 0.25% Triton X100/PBS.
4. ICC staining Estrogen Inducible Protein pS2 in MCF-7 cells (green). The nuclear counter stain is DAPI (blue). Cells were fixed in paraformaldehyde, permeabilised with 0.25% Triton X100/PBS.
5. ICC staining Estrogen Inducible Protein pS2 in PC-3M cells (green). The nuclear counter stain is DAPI (blue). Cells were fixed in paraformaldehyde, permeabilised with 0.25% Triton X100/PBS.
6. Flow cytometric analysis of MCF-7 cells with Estrogen Inducible Protein pS2 antibody at 1/100 dilution (red) compared with an unlabelled control (cells without incubation with primary antibody; black).





Application: FCM,ICC/IF,IHC,IP,WB

Recommended IHC: 1:50-200; ICC/IF: 1:50-200; IP: 1:10-50; FCM: 1:50-100

### Properties

Stability & Storage: Store at -20°C or -80°C for 12 months. Avoid repeated freeze-thaw cycles.

Shipping: Shipping with blue ice.

### Antigen Details

Immunogen: Recombinant Protein

Uniprot ID: P04155

Synonyms: PNR-2;Polypeptide P1.A;Protein pS2;Breast cancer estrogen-inducible protein;Trefoil factor 1

### Research Background

Trefoil peptides are protease resistant molecules secreted throughout the gut that play a role in mucosal healing. These peptides contain three intrachain disulfide bonds, forming the trefoil motif, or P-domain. pS2, also designated Md2, BCEI, TFF1 and pNR-2, is a trefoil protein that is highly expressed in normal gastric mucosa. pS2 has also been detected in a number of carcinomas including cancers of the breast, pancreas and stomach. pS2 is not present in normal breast tissue but is inducible by estrogen in MCF7 cells. pS2 is known to form dimers and this dimerization is

thought to play a role in its protective and healing properties. The gene encoding pS2 maps to human chromosome 21q22.3.

**Inhibitor · Natural Compounds · Compound Libraries · Recombinant Proteins**

This product is for Research Use Only · Not for Human or Veterinary or Therapeutic Use

Tel:781-999-4286 E\_mail:info@targetmol.com Address:34 Washington Street,Wellesley Hills,MA 02481