

## Anti-HER2/ERBB2 Antibody (90395)

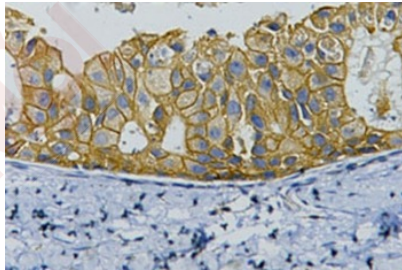
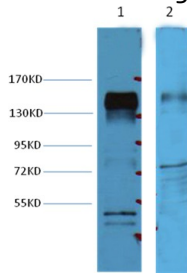
### Product Details

Reactivity:	Human,Mouse,Rat
Conjugation:	Unconjugated
Molecular Weight:	Actual: 138 kDa.
Clone:	90395
Purification:	Affinity purification using immunogen.

### Applications

#### Verified Activity:

1. Western blot analysis of Hela cell lysate (lane 1) and mouse brain (lane 2), using TMAC-01351 diluted at 1:4,000.
2. IHC staining of human breast cancer tissue with ErbB-2/HER-2 mouse mAb diluted at 1:200.



Application:	IHC,WB
Recommended	WB: 1:2000-4000; IHC: 1:200

### Properties

Stability & Storage:	Store at -20°C or -80°C for 12 months. Avoid repeated freeze-thaw cycles.
Shipping:	Shipping with blue ice.

### Antigen Details

Uniprot ID: P04626  
Synonyms: CD340;HER-2;MLN 19;ENV;herstatin;ENVW;EGFR2;ERBB2;NEU;HER2;HERV7Q;NGL;TKR1;ERVWE1;HERVW;MLN19

---

### Research Background

ErbB 2 is a receptor tyrosine kinase of the ErbB 2 family. It is closely related in structure to the epidermal growth factor receptor. ErbB 2 oncoprotein is detectable in a proportion of breast and other adenocarcinomas, as well as transitional cell carcinomas. In the case of breast cancer, expression determined by immunohistochemistry has been shown to be associated with poor prognosis.

**Inhibitor · Natural Compounds · Compound Libraries · Recombinant Proteins**

This product is for Research Use Only · Not for Human or Veterinary or Therapeutic Use

Tel:781-999-4286 E\_mail:info@targetmol.com Address:34 Washington Street,Wellesley Hills,MA 02481