

## Anti-Epsilon Tubulin Antibody (8Q708)

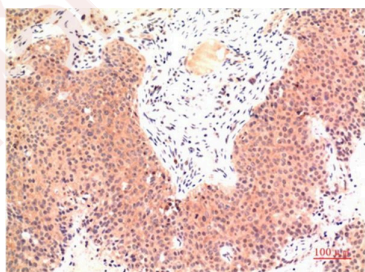
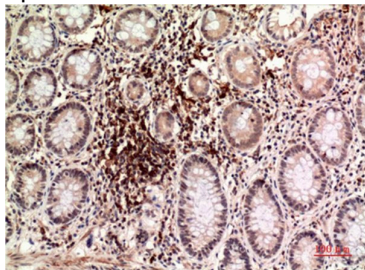
### Product Details

Ig Type:	IgG1
Reactivity:	Human,Rat,Mouse
Conjugation:	Unconjugated
Molecular Weight:	Theoretical: 55 kDa.
Clone:	8Q708

### Applications

#### Verified Activity:

1. Immunohistochemical analysis of paraffin-embedded Human Colon Carcinoma Tissue using Epsilon Tubulin Mouse mAb diluted at 1:200.
2. Immunohistochemical analysis of paraffin-embedded Human Colon Carcinoma Tissue using Epsilon Tubulin Mouse mAb diluted at 1:200.



Application:	IHC
Recommended	IHC: 1:100-200

### Properties

Stability & Storage:	Store at -20°C or -80°C for 12 months. Avoid repeated freeze-thaw cycles.
Shipping:	Shipping with blue ice.

Antigen Details

Immunogen: A synthesized peptide  
Uniprot ID: Q9UJT0  
Synonyms: εTubulin;ETubulin;E Tubulin;ε Tubulin;EpsilonTubulin

**Inhibitor · Natural Compounds · Compound Libraries · Recombinant Proteins**

This product is for Research Use Only · Not for Human or Veterinary or Therapeutic Use

Tel:781-999-4286 E\_mail:info@targetmol.com Address:34 Washington Street,Wellesley Hills,MA 02481