

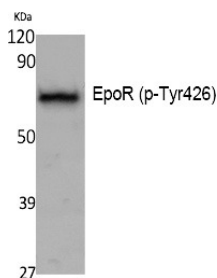
Anti-Phospho-EPOR (Tyr426) Polyclonal Antibody

Product Details

Ig Type:	IgG
Reactivity:	Human,Mouse,Rat
Conjugation:	Unconjugated
Molecular Weight:	Actual: 55 kDa.
Purification:	The antibody was affinity-purified from rabbit antiserum by affinity-chromatography using epitope-specific immunogen.

Applications

Verified Activity: 1. Western Blot analysis of K562, cells using Phospho-EpoR (Y426) Polyclonal Antibody.



Application:	ELISA,WB
Recommended	WB: 1:500-2000; ELISA: 1:20000

Properties

Stability & Storage:	Store at -20°C or -80°C for 12 months. Avoid repeated freeze-thaw cycles.
Shipping:	Shipping with blue ice.

Antigen Details

Immunogen:	A synthesized phosphopeptide: human EpoR around the phosphorylation site of Y426
Antigen Species:	human
Uniprot ID:	P19235
Synonyms:	p-EPOR (Y426);p-EPOR (Tyr426);EPOR (p-Y426);EPOR (p-Tyr426)

Inhibitor · Natural Compounds · Compound Libraries · Recombinant Proteins

This product is for Research Use Only. Not for Human or Veterinary or Therapeutic Use

Tel:781-999-4286 E_mail:info@targetmol.com Address:34 Washington Street,Wellesley Hills,MA 02481