

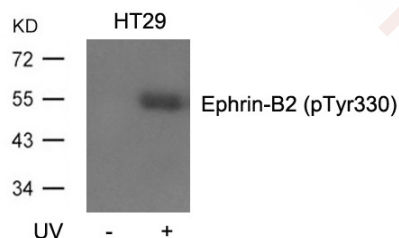
Anti-Phospho-Ephrin B2/EFNB2 (Tyr330) Polyclonal Antibody

Product Details

Ig Type:	IgG
Reactivity:	Human,Mouse,Rat
Conjugation:	Unconjugated
Purification:	Antibodies were produced by immunizing rabbits with synthetic peptide and KLH conjugates. Antibodies were purified by affinity-chromatography using epitope-specific peptide.

Applications

Verified Activity: 1. Western blot analysis of extracts from HT29 cells, untreated or treated with UV using Ephrin-B2 (Phospho-Tyr330) Antibody TMAC-01341.



Application: WB

Properties

Stability & Storage: Store at 2°C-8°C for 1 month. Store at -20°C or -80°C for 12 months. Avoid repeated freeze-thaw cycles.

Shipping: Shipping with blue ice.

Antigen Details

Immunogen: Peptide sequence around phosphorylation site of tyrosine 330 (N-I-Y(p)-Y-K) derived from Human Ephrin-B2

Antigen Species: human

Uniprot ID: P52799

Synonyms: Ephrin B2/EFNB2 (p-Y330);p-Ephrin B2/EFNB2 (Y330);p-Ephrin B2/EFNB2 (Tyr330);Ephrin B2/EFNB2 (p-Tyr330)

Research Background

Adducins are a family of cytoskeleton proteins encoded by three genes (a, beta, gamma). Adducin is a heterodimeric protein that consists of related subunits, which are produced from distinct genes but share a similar structure. a- and beta-adducin include a protease-resistant N-terminal region and a protease-sensitive, hydrophilic C-terminal region. a- and gamma-adducins are ubiquitously expressed. In contrast, beta-adducin is expressed at high levels in brain and hematopoietic tissues. Adducin binds with high affinity to Ca²⁺/calmodulin and is a substrate for protein kinases A and C. Alternative splicing results in multiple variants encoding distinct isoforms; however, not all variants have been fully described.

Inhibitor · Natural Compounds · Compound Libraries · Recombinant Proteins

This product is for Research Use Only · Not for Human or Veterinary or Therapeutic Use

Tel:781-999-4286 E_mail:info@targetmol.com Address:34 Washington Street,Wellesley Hills,MA 02481