

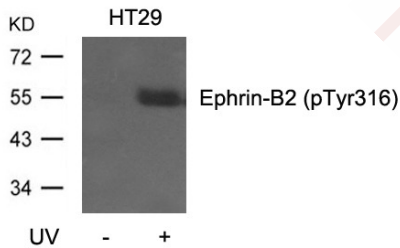
## Anti-Phospho-Ephrin B2/EFNB2 (Tyr316) Polyclonal Antibody

### Product Details

Ig Type:	IgG
Reactivity:	Human,Mouse,Rat
Conjugation:	Unconjugated
Purification:	Antibodies were produced by immunizing rabbits with synthetic peptide and KLH conjugates. Antibodies were purified by affinity-chromatography using epitope-specific peptide.

### Applications

Verified Activity: 1. Western blot analysis of extracts from HT29 cells, untreated or treated with UV using Ephrin-B2 (Phospho-Tyr316) Antibody TMAC-01340.



Application: WB

### Properties

Stability & Storage: Store at 2°C-8°C for 1 month. Store at -20°C or -80°C for 12 months. Avoid repeated freeze-thaw cycles.

Shipping: Shipping with blue ice.

### Antigen Details

Immunogen: Peptide sequence around phosphorylation site of tyrosine 316 (P-V-Y(p)-I-V) derived from Human Ephrin-B2

Antigen Species: human

Uniprot ID: P52799

Synonyms: Ephrin B2/EFNB2 (p-Tyr316);p-Ephrin B2/EFNB2 (Y316);p-Ephrin B2/EFNB2 (Tyr316);Ephrin B2/EFNB2 (p-Y316)

### Research Background

This gene product belongs to the 14-3-3 family of proteins which mediate signal transduction by binding to phosphoserine-containing proteins. This highly conserved protein family is found in both plants and mammals, and this protein is 99% identical to the mouse, rat and sheep orthologs. The encoded protein interacts with IRS1 protein, suggesting a role in regulating insulin sensitivity. Several transcript variants that differ in the 5' UTR but that encode the same protein have been identified for this gene.

**Inhibitor · Natural Compounds · Compound Libraries · Recombinant Proteins**

This product is for Research Use Only. Not for Human or Veterinary or Therapeutic Use

Tel:781-999-4286 E\_mail:info@targetmol.com Address:34 Washington Street,Wellesley Hills,MA 02481