

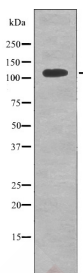
## Anti-Phospho-EphB6 (Tyr636) Polyclonal Antibody

## Product Details

Ig Type:	IgG
Reactivity:	Human,Mouse,Rat
Conjugation:	Unconjugated
Molecular Weight:	Theoretical: 119 kDa.
Purification:	Antibodies were produced by immunizing rabbits with synthetic phosphopeptide and KLH conjugates. Antibodies were purified by affinity-chromatography using epitope-specific phosphopeptide. Non-phospho specific antibodies were removed by chromatography using non-phosphopeptide.

## Applications

Verified Activity: 1. Western blot analysis EPHB6 (Phospho-Tyr636) using ATP1 Rat brain tissue lysates.



Application: WB  
Recommended WB: 1:1000

## Properties

Stability & Storage: Store at -20°C or -80°C for 12 months. Avoid repeated freeze-thaw cycles.  
Shipping: Shipping with blue ice.

## Antigen Details

Immunogen: A synthesized phosphopeptide: human EPHB6 around the phosphorylation site of Tyr636  
Antigen Species: human  
Uniprot ID: O15197  
Synonyms: p-EphB6 (Tyr636);EphB6 (p-Y636);EphB6 (p-Tyr636);p-EphB6 (Y636)

**Inhibitor · Natural Compounds · Compound Libraries · Recombinant Proteins**

This product is for Research Use Only. Not for Human or Veterinary or Therapeutic Use

Tel:781-999-4286 E\_mail:info@targetmol.com Address:34 Washington Street,Wellesley Hills,MA 02481