

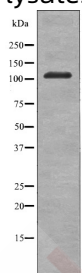
## Anti-Phospho-EphB3 (Tyr608) Polyclonal Antibody

## Product Details

Ig Type:	IgG
Reactivity:	Human,Mouse
Conjugation:	Unconjugated
Molecular Weight:	Theoretical: 110 kDa.
Purification:	Antibodies were produced by immunizing rabbits with synthetic phosphopeptide and KLH conjugates. Antibodies were purified by affinity-chromatography using epitope-specific phosphopeptide. Non-phospho specific antibodies were removed by chromatography using non-phosphopeptide.

## Applications

Verified Activity: 1. Western blot analysis EPHB3 (Phospho-Tyr608) using P Etoposide treated 293 whole cell lysates.



Application:	WB
Recommended	WB: 1:1000

## Properties

Stability & Storage:	Store at -20°C or -80°C for 12 months. Avoid repeated freeze-thaw cycles.
Shipping:	Shipping with blue ice.

## Antigen Details

Immunogen:	A synthesized phosphopeptide: human EPHB3 around the phosphorylation site of Tyr608
Antigen Species:	human
Uniprot ID:	P54753
Synonyms:	EphB3 (p-Y608);EphB3 (p-Tyr608);p-EphB3 (Y608);p-EphB3 (Tyr608)

**Inhibitor · Natural Compounds · Compound Libraries · Recombinant Proteins**

This product is for Research Use Only. Not for Human or Veterinary or Therapeutic Use

Tel:781-999-4286 E\_mail:info@targetmol.com Address:34 Washington Street,Wellesley Hills,MA 02481