

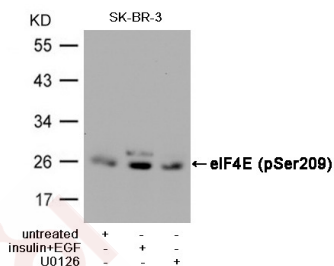
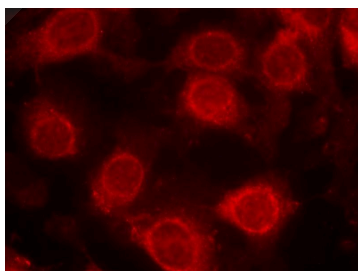
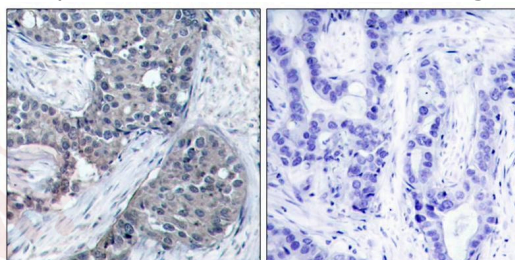
Anti-Phospho-EIF4E (Ser209) Polyclonal Antibody

Product Details

Ig Type:	IgG
Reactivity:	Human
Conjugation:	Unconjugated
Purification:	Antibodies were produced by immunizing rabbits with synthetic phosphopeptide and KLH conjugates. Antibodies were purified by affinity-chromatography using epitope-specific phosphopeptide. Non-phospho specific antibodies were removed by chromatography using non-phosphopeptide.

Applications

1. Immunohistochemical analysis of paraffin-embedded human breast carcinoma tissue using eIF4E (Phospho-Ser209) Antibody TMAC-01275 (left) or the same antibody preincubated with blocking peptide (right).
2. Immunofluorescence staining of methanol-fixed MCF cells using eIF4E (Phospho-Ser209) Antibody TMAC-01275.
3. Western blot analysis of extracts from SK-BR-3 cells, untreated or insulin and EGF treated, and pretreated with U0126 cells, using eIF4E (Phospho-Ser209) Antibody TMAC-01275.



Application: IF,IHC,WB

A DRUG SCREENING EXPERT

Properties

Stability & Storage: Store at 2°C-8°C for 1 month. Store at -20°C or -80°C for 12 months. Avoid repeated freeze-thaw cycles.

Shipping: Shipping with blue ice.

Antigen Details

Immunogen: Peptide sequence around phosphorylation site of serine 209 (S-G-S(p)-T-T) derived from Human eIF4E

Antigen Species: human

Uniprot ID: P06730

Synonyms: p-EIF4E (Ser209);EIF4E (p-S209);mRNA cap binding protein;IF4E_HUMAN;EIF4F;eIF 4F 25 kDa subunit;Eukaryotic translation initiation factor 4E;Phospho-EIF4E (S209);AUTS19;EIF 4F;EIF4E1;CBP;p-EIF4E (S209);EIF4E (p-Ser209);Eukaryotic translation initiation factor 4 E;Messenger RNA Cap Binding Protein eIF 4E;EIF4EL1;MGC111573;Eukaryotic translation initiation factor 4E like 1

Research Background

Recognizes and binds the 7-methylguanosine-containing mRNA cap during an early step in the initiation of protein synthesis and facilitates ribosome binding by inducing the unwinding of the mRNAs secondary structures.

Inhibitor · Natural Compounds · Compound Libraries · Recombinant Proteins

This product is for Research Use Only · Not for Human or Veterinary or Therapeutic Use

Tel:781-999-4286 E_mail:info@targetmol.com Address:34 Washington Street,Wellesley Hills,MA 02481