

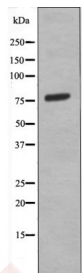
Anti-Phospho-EIF2B epsilon (Ser525) Polyclonal Antibody

Product Details

Ig Type:	IgG
Reactivity:	Human,Rat
Conjugation:	Unconjugated
Molecular Weight:	Theoretical: 80 kDa.
Purification:	Antibodies were produced by immunizing rabbits with synthetic phosphopeptide and KLH conjugates. Antibodies were purified by affinity-chromatography using epitope-specific phosphopeptide. Non-phospho specific antibodies were removed by chromatography using non-phosphopeptide.

Applications

Verified Activity: 1. Western blot analysis eIF2B-ε (Phospho-Ser525) using K562 whole cell lysates.



Application: WB
Recommended WB: 1:1000

Properties

Stability & Storage: Store at -20°C or -80°C for 12 months. Avoid repeated freeze-thaw cycles.
Shipping: Shipping with blue ice.

Antigen Details

Immunogen: A synthesized phosphopeptide: human eIF2B-ε around the phosphorylation site of Ser525
Antigen Species: human
Uniprot ID: Q13144
Synonyms: EIF2B epsilon (p-Ser525);p-EIF2B epsilon (S525);EIF2B epsilon (p-S525);p-EIF2B epsilon (Ser525)

Inhibitor · Natural Compounds · Compound Libraries · Recombinant Proteins

This product is for Research Use Only. Not for Human or Veterinary or Therapeutic Use

Tel:781-999-4286 E_mail:info@targetmol.com Address:34 Washington Street,Wellesley Hills,MA 02481