

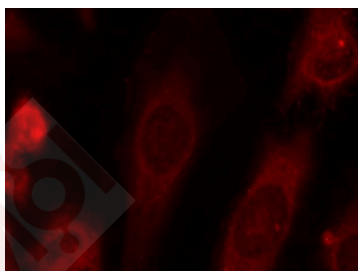
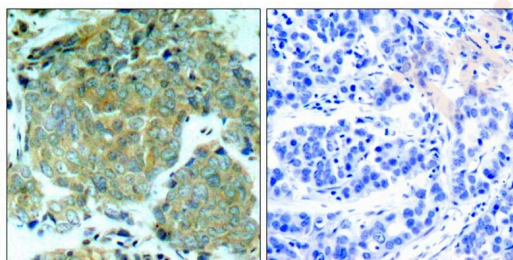
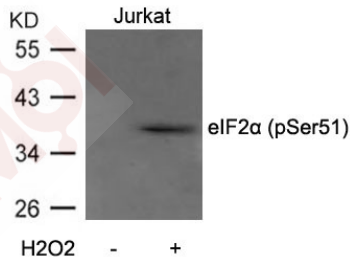
## Anti-Phospho-EIF2S1 (Ser51) Polyclonal Antibody 2

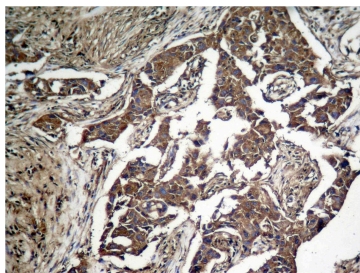
### Product Details

Ig Type:	IgG
Reactivity:	Human,Mouse,Rat,Dog,Pig,FiSh
Conjugation:	Unconjugated
Purification:	Antibodies were produced by immunizing rabbits with synthetic phosphopeptide and KLH conjugates. Antibodies were purified by affinity-chromatography using epitope-specific phosphopeptide. Non-phospho specific antibodies were removed by chromatography using non-phosphopeptide.

### Applications

- Verified Activity:
1. Western blot analysis of extracts from Jurkat cells untreated or treated with H<sub>2</sub>O<sub>2</sub> using eIF2 $\alpha$  (Phospho-Ser51) Antibody TMAC-01265.
  2. Immunohistochemical analysis of paraffin-embedded human breast carcinoma tissue using eIF2 $\alpha$  (Phospho-Ser51) Antibody TMAC-01265 (left) or the same antibody preincubated with blocking peptide (right).
  3. Immunofluorescence staining of methanol-fixed Hela cells using eIF2 $\alpha$  (Phospho-Ser51) Antibody TMAC-01265.
  4. Immunohistochemical analysis of paraffin-embedded human lung carcinoma tissue, using eIF2 $\alpha$  (Phospho-Ser51) Antibody TMAC-01265.





Application: ELISA,IF,IHC,WB

### Properties

Stability & Storage: Store at 2°C-8°C for 1 month. Store at -20°C or -80°C for 12 months. Avoid repeated freeze-thaw cycles.

Shipping: Shipping with blue ice.

### Antigen Details

Immunogen: Peptide sequence around phosphorylation site of serine 51 (E-L-S(p)-R-R) derived from Human eIF2a

Antigen Species: human

Uniprot ID: P05198

Synonyms: EIF2 alpha;EIF2S1 (p-S51);EIF 2alpha;EIF 2 alpha;p-EIF2S1 (S51);EIF 2;IF2A\_HUMAN;EIF2S1 (p-Ser51);EIF2A;EIF2;Phospho-EIF2S1 (S51);p-EIF2S1 (Ser51);Eukaryotic translation initiation factor 2 subunit 1 alpha 35kDa;EIF 2A

### Research Background

Functions in the early steps of protein synthesis by forming a ternary complex with GTP and initiator tRNA. This complex binds to a 40S ribosomal subunit, followed by mRNA binding to form a 43S preinitiation complex. Junction of the 60S ribosomal subunit to form the 80S initiation complex is preceded by hydrolysis of the GTP bound to eIF-2 and release of an eIF-2-GDP binary complex. In order for eIF-2 to recycle and catalyze another round of initiation, the GDP bound to eIF-2 must exchange with GTP by way of a reaction catalyzed by eIF-2B.

**Inhibitor · Natural Compounds · Compound Libraries · Recombinant Proteins**

This product is for Research Use Only · Not for Human or Veterinary or Therapeutic Use

Tel:781-999-4286 E\_mail:info@targetmol.com Address:34 Washington Street,Wellesley Hills,MA 02481