

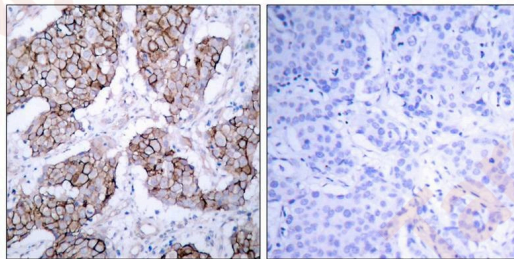
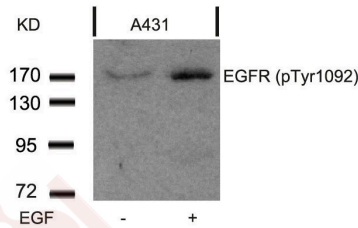
Anti-Phospho-EGFR (Tyr1092) Polyclonal Antibody

Product Details

Ig Type:	IgG
Reactivity:	Human,Rat
Conjugation:	Unconjugated
Purification:	Antibodies were produced by immunizing rabbits with synthetic phosphopeptide and KLH conjugates. Antibodies were purified by affinity-chromatography using epitope-specific phosphopeptide. Non-phospho specific antibodies were removed by chromatography using non-phosphopeptide.

Applications

- Verified Activity:
- Western blot analysis of extracts from A431 cells untreated or treated with EGF using EGFR (Phospho-Tyr1092) Antibody TMAC-01256.
 - Immunohistochemical analysis of paraffin-embedded human breast carcinoma tissue using EGFR (Phospho-Tyr1092) Antibody TMAC-01256 (left) or the same antibody preincubated with blocking peptide (right).



Application: IHC,WB

Properties

- Stability & Storage: Store at 2°C-8°C for 1 month. Store at -20°C or -80°C for 12 months. Avoid repeated freeze-thaw cycles.
- Shipping: Shipping with blue ice.

Antigen Details

Immunogen:	Peptide sequence around phosphorylation site of tyrosine1092 (P-E-Y(p)-I-N) derived from Human EGFR
Antigen Species:	human
Uniprot ID:	P00533
Synonyms:	EGFR (p-Tyr1092);p-EGFR (Tyr1092);EGFR (p-Y1092);p-EGFR (Y1092)

Research Background

Receptor for EGF, but also for other members of the EGF family, as TGF- α , amphiregulin, betacellulin, heparin-binding EGF-like growth factor, GP30 and vaccinia virus growth factor. Is involved in the control of cell growth and differentiation. Phosphorylates MUC1 in breast cancer cells and increases the interaction of MUC1 with SRC and CTNNB1/beta-catenin.

Inhibitor · Natural Compounds · Compound Libraries · Recombinant Proteins

This product is for Research Use Only · Not for Human or Veterinary or Therapeutic Use

Tel:781-999-4286 E_mail:info@targetmol.com Address:34 Washington Street,Wellesley Hills,MA 02481