

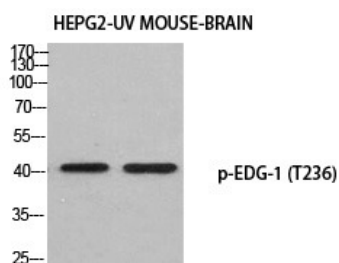
## Anti-Phospho-S1PR1 (Thr236) Polyclonal Antibody

## Product Details

Ig Type:	IgG
Reactivity:	Human,Mouse,Rat
Conjugation:	Unconjugated
Molecular Weight:	Actual: 42 kDa.
Purification:	The antibody was affinity-purified from rabbit antiserum by affinity-chromatography using epitope-specific immunogen.

## Applications

Verified Activity: 1. Western blot analysis of HEPG2-UV MOUSE-BRAIN using p-EDG-1 (T236) antibody.



Application: ELISA,IF,WB  
Recommended WB: 1:500-2000;IF: 1:200-1000;ELISA: 1:10000

## Properties

Stability & Storage: Store at -20°C or -80°C for 12 months. Avoid repeated freeze-thaw cycles.  
Shipping: Shipping with blue ice.

## Antigen Details

Immunogen: A synthesized phosphopeptide: human EDG-1 around the phosphorylation site of T236  
Antigen Species: Human  
Uniprot ID: P21453  
Synonyms: S1PR1 (p-T236);p-S1PR1 (Thr236);S1PR1 (p-Thr236);p-S1PR1 (T236)

Inhibitor · Natural Compounds · Compound Libraries · Recombinant Proteins

This product is for Research Use Only. Not for Human or Veterinary or Therapeutic Use

Tel:781-999-4286 E\_mail:info@targetmol.com Address:34 Washington Street,Wellesley Hills,MA 02481