

Anti-NHERF1 Antibody (1A168)

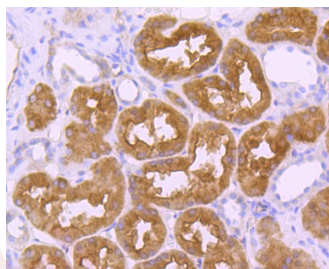
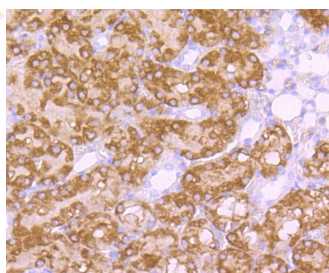
Product Details

Ig Type:	IgG
Reactivity:	Human,Rat
Conjugation:	Unconjugated
Molecular Weight:	Theoretical: 50 kDa.
Clone:	1A168
Purification:	ProA affinity purified

Applications

Verified Activity:

1. Western blot analysis of EBP50 on MCF-7 cells lysates using anti-EBP50 antibody at 1/1,000 dilution.
2. Immunohistochemical analysis of paraffin-embedded rat kidney tissue using anti-EBP50 antibody. Counter stained with hematoxylin.
3. Immunohistochemical analysis of paraffin-embedded human kidney tissue using anti-EBP50 antibody. Counter stained with hematoxylin.



Application:	IHC,WB
Recommended	WB: 1:1000-2000; IHC: 1:50-200

Properties

Stability & Storage: Store at -20°C or -80°C for 12 months. Avoid repeated freeze-thaw cycles.

Shipping: Shipping with blue ice.

Antigen Details

Immunogen: Recombinant Protein

Uniprot ID: O14745

Synonyms: NHERF;Sodium-hydrogen exchanger regulatory factor 1;Regulatory cofactor of Na(+)/H(+) exchanger;SLC9A3R1;NHERF1;Ezrin-radixin-moesin-binding phosphoprotein 50 (EBP50); NHERF-1;Na(+)/H(+) exchange regulatory cofactor NHE-RF1;Solute carrier family 9 isoform A3 regulatory factor 1

Research Background

The Na⁺/H⁺ exchange protein (NHE3) functions in transepithelial Na⁺ absorption and is primarily expressed in the intestinal and renal brush border membrane. NHE3 regulatory factor 1 (NHERF-1) interacts with NHE3 through two PDZ (for PSD-95, Discs-large and ZO-1 homology) domains, which are protein-protein interaction modules that associate with specific carboxy-terminal motifs on target proteins. Also known as EBP50, NHERF-1 facilitates cAMP inhibition of NHE3 to decrease Na⁺ adsorption. NHERF-1 functions as a scaffold for an essential multiprotein complex of Ezrin and NHE3 for cAMP-mediated phosphorylation and consequent inhibition of NHE3. The amino-terminal PDZ domain regulates the dimerization of NHERF-1 in vivo. G protein-coupled receptor kinase 6A phosphorylates NHERF-1 at Ser 289 via a PDZ domain-mediated interaction. NHERF-2, also known as E3KARP, is a ubiquitously expressed protein which also functions in NHE2 regulation.

Inhibitor · Natural Compounds · Compound Libraries · Recombinant Proteins

This product is for Research Use Only · Not for Human or Veterinary or Therapeutic Use

Tel:781-999-4286 E_mail:info@targetmol.com Address:34 Washington Street,Wellesley Hills,MA 02481