

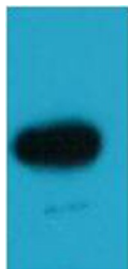
## Anti-EBFP Polyclonal Antibody

### Product Details

Ig Type:	IgG
Conjugation:	Unconjugated
Purification:	Affinity purification using immunogen.

### Applications

Verified Activity: 1. Western blot analysis of EBFP recombinant protein, using TMAC-01218 diluted at 1:5,000.



Application:	WB
Recommended	WB: 1:2000-5000

### Properties

Stability & Storage:	Store at -20°C or -80°C for 12 months. Avoid repeated freeze-thaw cycles.
Shipping:	Shipping with blue ice.

### Antigen Details

Immunogen:	Recombinant Protein: EBFP-tag
Synonyms:	EBFP;Enhanced Blue Fluorescent Protein;Blue Fluorescent Protein;BFP

### Research Background

Enhanced Blue Fluorescent Protein (EBFP) emits a strong blue fluorescence. EBFP can be used as protein "tags" to study the sub-cellular localization of proteins and/or their translocation upon stimulation or as markers for transfection in transient and stable expression systems.

**Inhibitor · Natural Compounds · Compound Libraries · Recombinant Proteins**

This product is for Research Use Only. Not for Human or Veterinary or Therapeutic Use

Tel:781-999-4286 E\_mail:info@targetmol.com Address:34 Washington Street,Wellesley Hills,MA 02481