

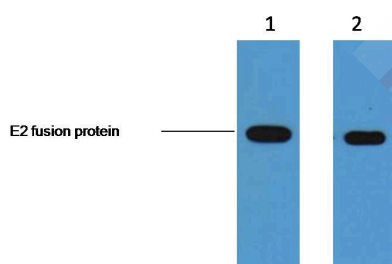
Anti-E2-Tag Antibody (1A251)

Product Details

Ig Type: IgG1
Conjugation: Unconjugated
Clone: 1A251
Purification: Affinity-chromatography

Applications

Verified Activity: 1. 2ug E2 fusion protein+ Primary antibody dilution at 1、 1:5,000 2、 1:10,000.



Application: WB
Recommended WB: 1:3000-10000

Properties

Stability & Storage: Store at -20°C or -80°C for 12 months. Avoid repeated freeze-thaw cycles.
Shipping: Shipping with blue ice.

Antigen Details

Immunogen: KLH conjugated E2-tag peptide GVSSTSSDFRDR

Inhibitor · Natural Compounds · Compound Libraries · Recombinant Proteins

This product is for Research Use Only· Not for Human or Veterinary or Therapeutic Use

Tel:781-999-4286 E_mail:info@targetmol.com Address:34 Washington Street,Wellesley Hills,MA 02481