

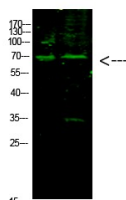
## Anti-Acetyl-E2F1 (Lys117) Polyclonal Antibody

## Product Details

|                   |   |
|-------------------|---|
| Ig Type:          | IgG   |
| Reactivity:       | Human,Mouse,Rat   |
| Conjugation:      | Unconjugated  |
| Molecular Weight: | Theoretical: 70 kDa.  |
| Purification:     | The antibody was affinity-purified from rabbit antiserum by affinity-chromatography using epitope-specific immunogen. |

## Applications

Verified Activity: 1. Western Blot analysis of 1,hela 2,mouse-brain cells using primary antibody diluted at 1:1000 (°C overnight). Secondary antibody Goat Anti-rabbit IgG IRDye 800 ( diluted at 1:5000, 25°C, 1 hour).



|              |                |
|--------------|----------------|
| Application: | WB             |
| Recommended  | WB: 1:500-2000 |

## Properties

|                      |   |
|----------------------|---|
| Stability & Storage: | Store at -20°C or -80°C for 12 months. Avoid repeated freeze-thaw cycles. |
| Shipping:            | Shipping with blue ice.   |

## Antigen Details

|                  |  |
|------------------|--|
| Immunogen:       | A synthesized acetylpeptide: human E2F-1 around the acetylation site of K117   |
| Antigen Species: | Human  |
| Uniprot ID:      | P09874   |
| Synonyms:        | Retinoblastoma-binding protein 3 (RBBP-3);Transcription factor E2F1;PBR3;RBBP3;E2F-1;E2F1;<br>Retinoblastoma-associated protein 1 (RBAP-1);pRB-binding protein E2F-1 |

**Inhibitor · Natural Compounds · Compound Libraries · Recombinant Proteins**

This product is for Research Use Only. Not for Human or Veterinary or Therapeutic Use

Tel:781-999-4286 E\_mail:info@targetmol.com Address:34 Washington Street,Wellesley Hills,MA 02481