

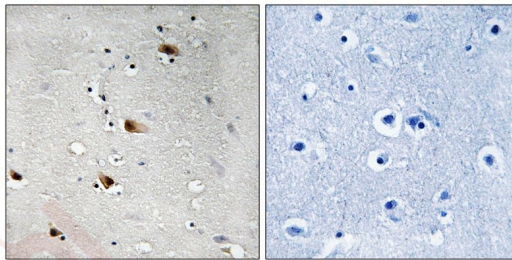
Anti-Phospho-E2A (Thr355) Polyclonal Antibody

Product Details

Ig Type:	IgG
Reactivity:	Human,Mouse,Rat
Conjugation:	Unconjugated
Molecular Weight:	Actual: 67 kDa.
Purification:	Antibodies were produced by immunizing rabbits with synthetic phosphopeptide and KLH conjugates. Antibodies were purified by affinity-chromatography using epitope-specific phosphopeptide. Non-phospho specific antibodies were removed by chromatography using non-phosphopeptide.

Applications

Verified Activity: 1. Immunohistochemical analysis of paraffin-embedded human brain tissue using E2A (Phospho-Thr355) antibody TMAC-01207 (left) or the same antibody preincubated with blocking peptide (right).



Application:	IHC
Recommended	IHC: 1:50-100

Properties

Stability & Storage:	Store at -20°C or -80°C for 12 months. Avoid repeated freeze-thaw cycles.
Shipping:	Shipping with blue ice.

Antigen Details

Immunogen:	Peptide sequence around phosphorylation site of threonine 355 (P-S-T(p)-P-V) derived from Human E2A
Antigen Species:	Human
Uniprot ID:	P15923
Synonyms:	E2A (p-Thr355);p-E2A (Thr355);E2A (p-T355);p-E2A (T355)

Research Background

E2A is a transcription factor that plays major roles in determining tissue-specific cell fate during embryogenesis, like muscle or early B-cell differentiation. Heterodimers between E2A and tissue-specific basic helix-loop-helix (bHLH) Dimers bind DNA on E-box motifs: 5'- CANNTG-3'. Binds to the kappa-E2 site in the kappa immunoglobulin gene enhancer. Deletions in E2A have been observed in a subset of pre-B-cell acute lymphoblastic leukemia (B-ALL)

cases. Two alternatively spliced human isoforms have been described.

Inhibitor · Natural Compounds · Compound Libraries · Recombinant Proteins

This product is for Research Use Only · Not for Human or Veterinary or Therapeutic Use

Tel:781-999-4286 E_mail:info@targetmol.com Address:34 Washington Street,Wellesley Hills,MA 02481