

Anti-Dysferlin Antibody (4C391)

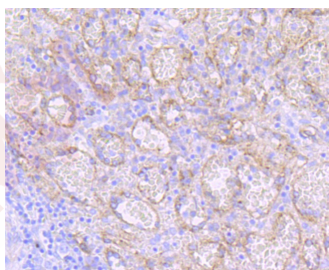
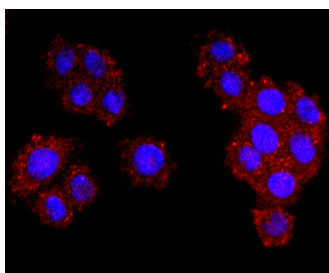
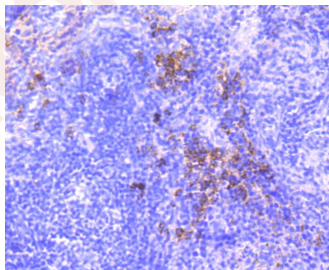
Product Details

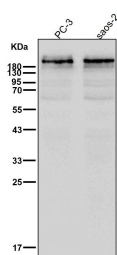
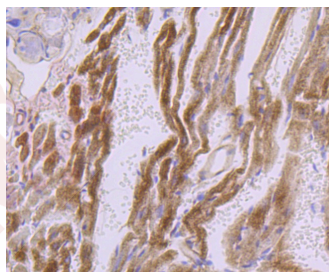
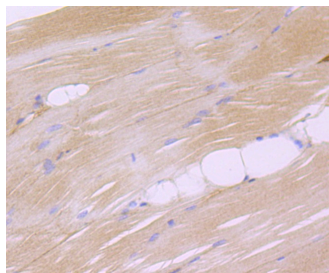
Ig Type:	IgG
Reactivity:	Human,Mouse
Conjugation:	Unconjugated
Molecular Weight:	Theoretical: 237 kDa.
Clone:	4C391
Purification:	Affinity-chromatography

Applications

Verified Activity:

1. Immunohistochemical analysis of paraffin-embedded mouse spleen tissue using anti-Dysferlin antibody. Counter stained with hematoxylin.
2. ICC staining Dysferlin in SW480 cells (red). The nuclear counter stain is DAPI (blue). Cells were fixed in paraformaldehyde, permeabilised with 0.25% Triton X100/PBS.
3. Immunohistochemical analysis of paraffin-embedded human spleen tissue using anti-Dysferlin antibody. Counter stained with hematoxylin.
4. Immunohistochemical analysis of paraffin-embedded mouse skeletal muscle tissue using anti-Dysferlin antibody. Counter stained with hematoxylin.
5. Immunohistochemical analysis of paraffin-embedded mouse heart tissue using anti-Dysferlin antibody. Counter stained with hematoxylin.
6. All lanes use the Antibody at 1:1K dilution for 1 hour at room temperature.





Application: ICC/IF,IHC,WB

Recommended WB: 1:1000-2000; IHC: 1:100-200; ICC/IF: 1:50-200

Properties

Stability & Storage: Store at 2°C-8°C for 1 month. Store at -20°C or -80°C for 12 months. Avoid repeated freeze-thaw cycles.

Shipping: Shipping with blue ice.

Antigen Details

Immunogen: A synthesized peptide: human Dysferlin

Antigen Species: Human

Uniprot ID: O75923

Synonyms: Limb girdle muscular dystrophy 2B;MMD1;FER1L1;Fer 1 like protein 1;FLJ90168;DYSF_HUMAN; FLJ00175;Dystrophy associated fer 1 like protein;Dysferlin limb girdle muscular dystrophy 2B (autosomal recessive);DMAT;LGMD2B;DYSF;Dystrophy associated fer 1 like 1;Dysferlin limb girdle muscular dystrophy 2B;Fer-1-like protein 1;Dystrophy associated fer1 like protein;Limb girdle muscular dystrophy 2B (autosomal recessive);Fer1 like protein 1;LGMD 2B;Dystrophy-associated fer-1-like protein;MM;Miyoshi myopathy;Dysferlin;Dystrophy associated fer1 like 1

Research Background

Key calcium ion sensor involved in the Ca²⁺-triggered synaptic vesicle-plasma membrane fusion. Plays a role in the sarcolemma repair mechanism of both skeletal muscle and cardiomyocytes that permits rapid resealing of membranes disrupted by mechanical stress.

Inhibitor · Natural Compounds · Compound Libraries · Recombinant Proteins

This product is for Research Use Only · Not for Human or Veterinary or Therapeutic Use

Tel:781-999-4286 E_mail:info@targetmol.com Address:34 Washington Street,Wellesley Hills,MA 02481