

## Anti-Phospho-DYRK1A/B (Tyr321/273) Polyclonal Antibody

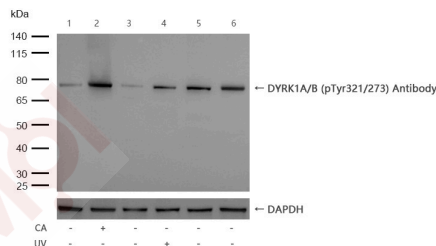
### Product Details

Ig Type:	IgG
Reactivity:	Human,Mouse,Rat
Conjugation:	Unconjugated
Molecular Weight:	Theoretical: 70 kDa.
Purification:	Antibodies were produced by immunizing rabbits with synthetic phosphopeptide and KLH conjugates. Antibodies were purified by affinity-chromatography using epitope-specific phosphopeptide. Non-phospho specific antibodies were removed by chromatography using non-phosphopeptide.

### Applications

#### Verified Activity:

1. All lanes: DYRK1A/B (Phospho-Tyr321/273) Antibody at 1/500 dilution, Lane 1: HeLa whole cell lysates, Lane 2: HeLa treated with 100nM Calyculin A for 30min whole cell lysates, Lane3 : HepG2 whole cell lysates, Lane 4: HepG2 treated with UV for 15min whole cell lysates, Lane 5: Mouse brain lysates Lane 6: Rat brain lysates Lysates/proteins at 20 µg per lane. Secondary All lanes: Goat Anti-Rabbit IgG H&L (HRP) at 1/20000 dilution, Predicted band size: 70 kDa, Observed band size: 70-80 kDa, Exposure time: 5 seconds.



Application:	WB
Recommended	WB: 1:1000

### Properties

Stability & Storage:	Store at -20°C or -80°C for 12 months. Avoid repeated freeze-thaw cycles.
Shipping:	Shipping with blue ice.

### Antigen Details

Immunogen:	A synthesized phosphopeptide: human DYRK1A/B around the phosphorylation site of Tyr321/273
Antigen Species:	human
Synonyms:	p-DYRK1A/B (Y321/273);DYRK1A/B (p-Tyr321/273);p-DYRK1A/B (Tyr321/273);DYRK1A/B (p-Y321/273)

**Inhibitor · Natural Compounds · Compound Libraries · Recombinant Proteins**

This product is for Research Use Only · Not for Human or Veterinary or Therapeutic Use

Tel:781-999-4286 E\_mail:info@targetmol.com Address:34 Washington Street,Wellesley Hills,MA 02481