

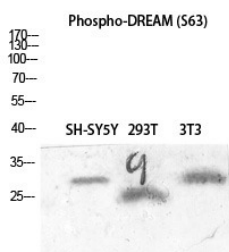
## Anti-Phospho-CSEN (Ser63) Polyclonal Antibody

## Product Details

Ig Type:	IgG
Reactivity:	Human,Mouse
Conjugation:	Unconjugated
Molecular Weight:	Actual: 29 kDa.
Purification:	The antibody was affinity-purified from rabbit antiserum by affinity-chromatography using epitope-specific immunogen.

## Applications

Verified Activity: 1. Western blot analysis of SH-SY5Y 293T 3T3 lysis using Phospho-DREAM (S63) antibody.



Application: ELISA,IF,IHC,WB

Recommended WB: 1:500-2000; IHC: 1:100-300; IF: 1:200-1000; ELISA: 1:20000

## Properties

Stability & Storage: Store at -20°C or -80°C for 12 months. Avoid repeated freeze-thaw cycles.

Shipping: Shipping with blue ice.

## Antigen Details

Immunogen:	A synthesized phosphopeptide: human DREAM around the phosphorylation site of S63
Antigen Species:	human
Uniprot ID:	Q9Y2W7
Synonyms:	p-CSEN (S63);p-CSEN (Ser63);CSEN (p-Ser63);CSEN (p-S63)

**Inhibitor · Natural Compounds · Compound Libraries · Recombinant Proteins**

This product is for Research Use Only. Not for Human or Veterinary or Therapeutic Use

Tel:781-999-4286 E\_mail:info@targetmol.com Address:34 Washington Street,Wellesley Hills,MA 02481