

Anti-DPY30 Antibody (7Z668)

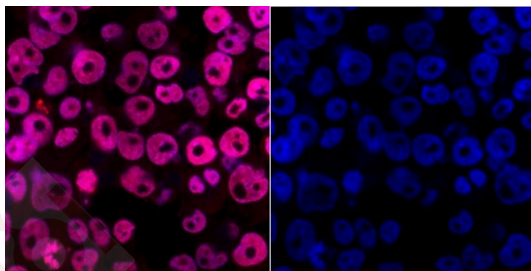
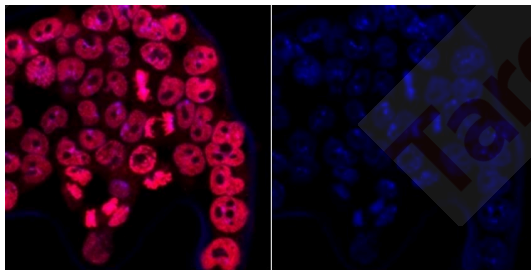
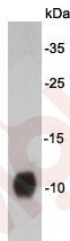
Product Details

Ig Type:	IgG1
Reactivity:	Human,Mouse
Conjugation:	Unconjugated
Molecular Weight:	Theoretical: 11 kDa.
Clone:	7Z668
Purification:	Protein A affinity purified.

Applications

Verified Activity:

1. Western blot analysis on F9 cell lysates using anti-DPY30 Mouse mAb.
2. ICC staining DPY30 in F9 cells (red). Cells were fixed in paraformaldehyde, permeabilised with 0.25% Triton X100/PBS and counterstained with DAPI in order to highlight the nucleus (blue).
3. ICC staining DPY30 in NCCIT cells (red). Cells were fixed in paraformaldehyde, permeabilised with 0.25% Triton X100/PBS and counterstained with DAPI in order to highlight the nucleus (blue).



Application: IF-Cell, WB

Recommended WB: 1:500

Properties

Stability & Storage: Store at -20°C or -80°C for 12 months. Avoid repeated freeze-thaw cycles.

Shipping: Shipping with blue ice.

Antigen Details

Immunogen: Peptide

Uniprot ID: Q9C005

Synonyms: DPY30_HUMAN;Dpy-30-like protein;HDPY-30;Saf19;Dpy-30L;DPY 30;Protein dpy-30 homolog

Research Background

DPPA2 (developmental pluripotency associated 2) is an embryo-cancer antigen that is coexpressed with cancer-testis antigens in non-small cell lung cancer. Dppa2 is closely linked SAP motif genes restricted to pluripotent cells and the germ line. It may play a role in maintaining cell pluripotentiality and in embryo preimplantation development.

Inhibitor · Natural Compounds · Compound Libraries · Recombinant Proteins

This product is for Research Use Only · Not for Human or Veterinary or Therapeutic Use

Tel:781-999-4286 E_mail:info@targetmol.com Address:34 Washington Street,Wellesley Hills,MA 02481