

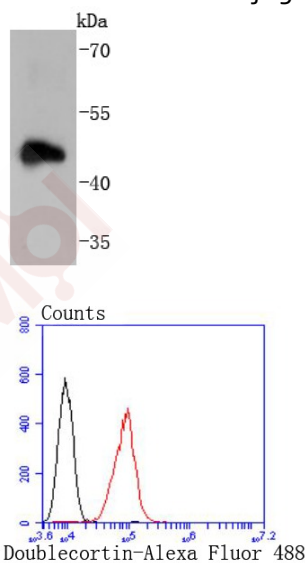
Anti-Doublecortin/DCX Antibody (5Z558)

Product Details

Ig Type:	IgG
Reactivity:	Human,Mouse,Rat
Conjugation:	Unconjugated
Molecular Weight:	Theoretical: 41 kDa.
Clone:	5Z558
Purification:	ProA affinity purified

Applications

- Verified Activity:
1. Western blot analysis of Doublecortin on human brain lysates using anti-Doublecortin antibody at 1/1,000 dilution.
 2. Flow cytometric analysis of HepG2 cells with Doublecortin antibody at 1/50 dilution (red) compared with an unlabelled control (cells without incubation with primary antibody; black). Alexa Fluor 488-conjugated goat anti rabbit IgG was used as the secondary antibody.



Application:	FCM,WB
Recommended	WB: 1:1000-5000; FCM: 1:50-100

Properties

- Stability & Storage: Store at -20°C or -80°C for 12 months. Avoid repeated freeze-thaw cycles.
- Shipping: Shipping with blue ice.

Antigen Details

Immunogen: Recombinant Protein
Uniprot ID: O43602
Synonyms: LISX;doublecortin;DBCN;DC;XLIS;SCLH

Research Background

Lissencephaly (smooth brain) is an abnormality of brain development characterized by incomplete neuronal migration and a smooth cerebral surface, resulting in severe mental retardation. Genetic analysis identified two proteins that are mutated in some cases of lissencephaly, designated lissencephaly-1 protein (LIS1) and doublecortin. LIS1 shows sequence homology to β -subunits of heterotrimeric G proteins. Doublecortin contains a consensus Abl phosphorylation site, and it has some sequence homology to a predicted kinase protein. Both proteins are highly expressed in developing brain, suggesting that they may be involved in a signal transduction pathway that is crucial to brain development.

Inhibitor · Natural Compounds · Compound Libraries · Recombinant Proteins

This product is for Research Use Only · Not for Human or Veterinary or Therapeutic Use

Tel:781-999-4286 E_mail:info@targetmol.com Address:34 Washington Street,Wellesley Hills,MA 02481