

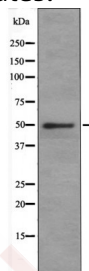
## Anti-Phospho-Doublecortin/DCX (Ser378) Polyclonal Antibody

## Product Details

Ig Type:	IgG
Reactivity:	Human,Mouse,Rat
Conjugation:	Unconjugated
Molecular Weight:	Theoretical: 49 kDa.
Purification:	Antibodies were produced by immunizing rabbits with synthetic phosphopeptide and KLH conjugates. Antibodies were purified by affinity-chromatography using epitope-specific phosphopeptide. Non-phospho specific antibodies were removed by chromatography using non-phosphopeptide.

## Applications

Verified Activity: 1. Western blot analysis Doublecortin (Phospho-Ser378) using Insulin treated 293 whole cell lysates.



Application: WB  
Recommended WB: 1:1000

## Properties

Stability & Storage: Store at -20°C or -80°C for 12 months. Avoid repeated freeze-thaw cycles.  
Shipping: Shipping with blue ice.

## Antigen Details

Immunogen: A synthesized phosphopeptide: human Doublecortin around the phosphorylation site of Ser378  
Antigen Species: human  
Uniprot ID: O43602  
Synonyms: Doublecortin/DCX (p-S378);p-Doublecortin/DCX (S378);p-Doublecortin/DCX (Ser378); Doublecortin/DCX (p-Ser378)

**Inhibitor · Natural Compounds · Compound Libraries · Recombinant Proteins**

This product is for Research Use Only. Not for Human or Veterinary or Therapeutic Use

Tel:781-999-4286 E\_mail:info@targetmol.com Address:34 Washington Street,Wellesley Hills,MA 02481