

## Anti-Cyclophilin B Antibody (2S390)

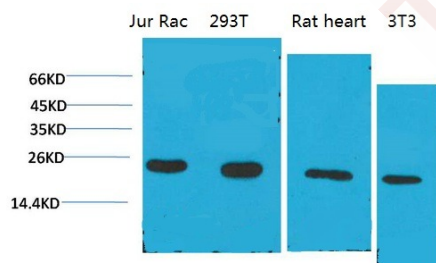
## Product Details

|                   |                      |
|-------------------|----------------------|
| Ig Type:          | IgG1                 |
| Reactivity:       | Human,Mouse,Rat      |
| Conjugation:      | Unconjugated         |
| Molecular Weight: | Theoretical: 21 kDa. |
| Clone:            | 2S390                |

## Applications

## Verified Activity:

1. Western blot analysis of 1) Jurkat, 2)293T, 3)Rat Liver Tissue, 4)3T3 with Cyclophilin B Mouse mAb diluted at 1:2,000.



|              |                 |
|--------------|-----------------|
| Application: | WB              |
| Recommended  | WB: 1:1000-2000 |

## Properties

|                      |   |
|----------------------|---|
| Stability & Storage: | Store at -20°C or -80°C for 12 months. Avoid repeated freeze-thaw cycles. |
| Shipping:            | Shipping with blue ice.   |

## Antigen Details

|             |   |
|-------------|---|
| Immunogen:  | A synthesized peptide   |
| Uniprot ID: | P23284  |
| Synonyms:   | SCYLP;CYPB;peptidylprolyl isomerase B (cyclophilin B);OI9;CYP-S1;HEL-S-39 |

**Inhibitor · Natural Compounds · Compound Libraries · Recombinant Proteins**

This product is for Research Use Only. Not for Human or Veterinary or Therapeutic Use

Tel:781-999-4286 E\_mail:info@targetmol.com Address:34 Washington Street,Wellesley Hills,MA 02481