

Anti-CCNE1 Antibody (7P753)

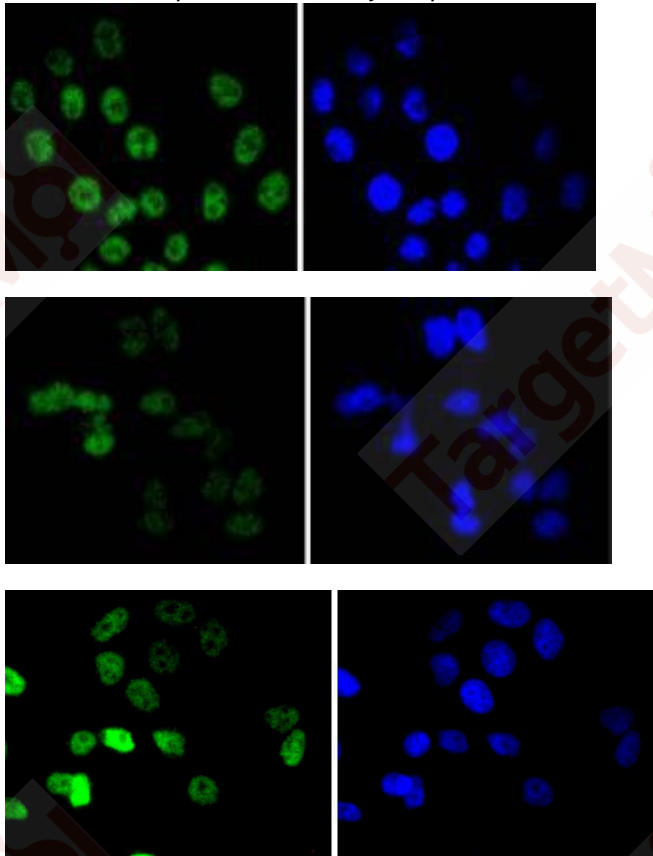
Product Details

Ig Type:	IgG
Reactivity:	Human
Conjugation:	Unconjugated
Molecular Weight:	Theoretical: 48 kDa.
Clone:	7P753
Purification:	ProA affinity purified

Applications

Verified Activity:

1. ICC staining Cyclin E1 in HepG2 cells (green). The nuclear counter stain is DAPI (blue). Cells were fixed in paraformaldehyde, permeabilised with 0.25% Triton X100/PBS.
2. ICC staining Cyclin E1 in Hela cells (green). The nuclear counter stain is DAPI (blue). Cells were fixed in paraformaldehyde, permeabilised with 0.25% Triton X100/PBS.
3. ICC staining Cyclin E1 in MCF-7 cells (green). The nuclear counter stain is DAPI (blue). Cells were fixed in paraformaldehyde, permeabilised with 0.25% Triton X100/PBS.



Application: ICC/IF, WB

Recommended WB: 1:1000; ICC/IF: 1:50-200

Properties

Stability & Storage: Store at -20°C or -80°C for 12 months. Avoid repeated freeze-thaw cycles.

Shipping: Shipping with blue ice.

Antigen Details

Immunogen: Recombinant Protein

Uniprot ID: P24864

Synonyms: cyclin E1;CCNE

Research Background

Cyclins were first identified in invertebrates as proteins that oscillate dramatically through the cell cycle. These proteins have been well conserved through evolution and play a critical role in regulation of cell division. cyclin E, along with the three cyclin D proteins and cyclin C, has been shown to represent a putative G1 cyclin on the basis of its cyclic pattern of mRNA expression, with maximal levels being detected near the G1/S boundary. cyclin E has been found to be associated with the transcription factor E2F in a temporally regulated manner. The cyclin E/E2F complex is detected primarily during the G1 phase of the cell cycle and decreases as cells enter S phase. E2F is known to be a critical transcription factor for expression of several S phase specific proteins.

Inhibitor · Natural Compounds · Compound Libraries · Recombinant Proteins

This product is for Research Use Only · Not for Human or Veterinary or Therapeutic Use

Tel:781-999-4286 E_mail:info@targetmol.com Address:34 Washington Street,Wellesley Hills,MA 02481