

Anti-CCND1 Antibody (4L128)

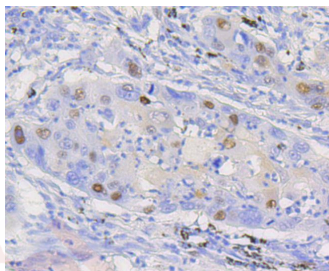
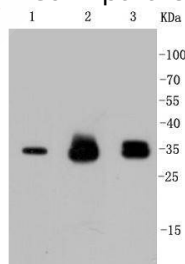
Product Details

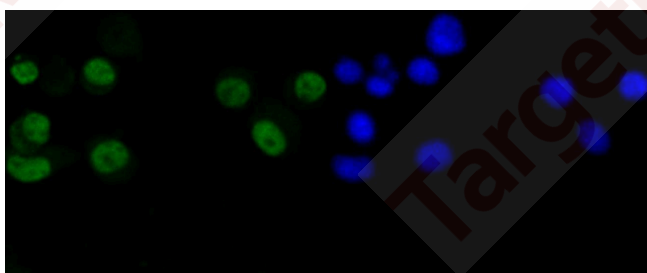
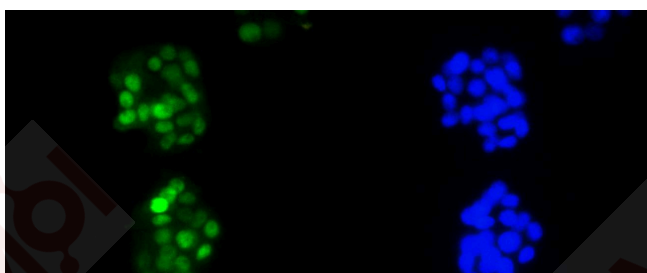
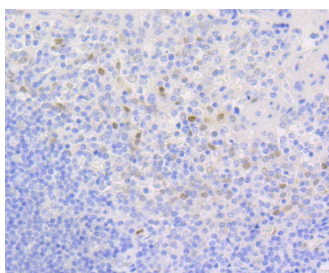
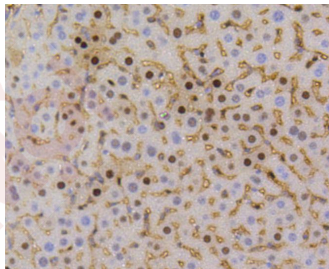
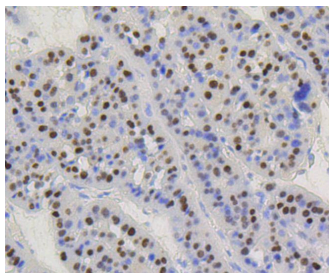
Ig Type:	IgG
Reactivity:	Human,Mouse,Rat
Conjugation:	Unconjugated
Molecular Weight:	Theoretical: 34 kDa.
Clone:	4L128
Purification:	ProA affinity purified

Applications

Verified Activity:

1. Western blot analysis of Cyclin D1 on different lysates using anti-Cyclin D1 antibody at 1/1,000 dilution. Positive control: Lane 1: Hela, Lane 2: PC-12, Lane 3: SH-SY-5Y.
2. Immunohistochemical analysis of paraffin-embedded human lung carcinoma tissue using anti-Cyclin D1 antibody. Counter stained with hematoxylin.
3. Immunohistochemical analysis of paraffin-embedded human liver carcinoma tissue using anti-Cyclin D1 antibody. Counter stained with hematoxylin.
4. Immunohistochemical analysis of paraffin-embedded mouse liver tissue using anti-Cyclin D1 antibody. Counter stained with hematoxylin.
5. Immunohistochemical analysis of paraffin-embedded human tonsil tissue using anti-Cyclin D1 antibody. Counter stained with hematoxylin.
6. ICC staining Cyclin D1 in PC-12 cells (green). The nuclear counter stain is DAPI (blue). Cells were fixed in paraformaldehyde, permeabilised with 0.25% Triton X100/PBS.
7. ICC staining Cyclin D1 in N2A cells (green). The nuclear counter stain is DAPI (blue). Cells were fixed in paraformaldehyde, permeabilised with 0.25% Triton X100/PBS.





Application: ICC/IF,IHC,IP,WB

Recommended WB: 1:1000-5000; IHC: 1:50-200; ICC/IF: 1:50-200

Properties

Stability & Storage: Store at -20°C or -80°C for 12 months. Avoid repeated freeze-thaw cycles.

Shipping: Shipping with blue ice.

Antigen Details

Immunogen: Recombinant Protein

Uniprot ID: P24385

Research Background

The proliferation of eukaryotic cells is controlled at specific points in the cell cycle, particularly at the G1 to S and the G2 to M transitions. It is well established that the Cdc2 p34-cyclin B protein kinase plays a critical role in the G2 to M transition while cyclin A associates with Cdk2 p33 and functions in S phase. Considerable effort directed towards the identification of G1 cyclins has led to the isolation of cyclin D, cyclin C and cyclin E. Of these, cyclin D corresponds to a putative human oncogene, designated PRAD1, which maps at the site of the Bcl1 rearrangement in certain lymphomas and leukemias. Two additional human type D cyclins, as well as their mouse homologs, have been identified. Evidence has established that members of the cyclin D family function to regulate phosphorylation of the retinoblastoma gene product, thereby activating E2F transcription factors.

Inhibitor · Natural Compounds · Compound Libraries · Recombinant Proteins

This product is for Research Use Only · Not for Human or Veterinary or Therapeutic Use

Tel: 781-999-4286 E_mail: info@targetmol.com Address: 34 Washington Street, Wellesley Hills, MA 02481