

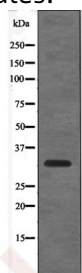
Anti-Phospho-CCND1 (Thr288) Polyclonal Antibody

Product Details

Ig Type:	IgG
Reactivity:	Human,Mouse,Rat
Conjugation:	Unconjugated
Molecular Weight:	Theoretical: 33 kDa.
Purification:	Antibodies were produced by immunizing rabbits with synthetic phosphopeptide and KLH conjugates. Antibodies were purified by affinity-chromatography using epitope-specific phosphopeptide. Non-phospho specific antibodies were removed by chromatography using non-phosphopeptide.

Applications

Verified Activity: 1. Western blot analysis Cyclin D1 (Phospho-Thr288) using EGF treated RAW264.7 whole cell lysates.



Application: WB
Recommended WB: 1:1000

Properties

Stability & Storage: Store at -20°C or -80°C for 12 months. Avoid repeated freeze-thaw cycles.
Shipping: Shipping with blue ice.

Antigen Details

Immunogen: A synthesized phosphopeptide: human Cyclin D1 around the phosphorylation site of Thr288
Antigen Species: human
Uniprot ID: P24385
Synonyms: p-CCND1 (T288);CCND1 (p-Thr288);CCND1 (p-T288);p-CCND1 (Thr288)

Inhibitor · Natural Compounds · Compound Libraries · Recombinant Proteins

This product is for Research Use Only. Not for Human or Veterinary or Therapeutic Use

Tel:781-999-4286 E_mail:info@targetmol.com Address:34 Washington Street,Wellesley Hills,MA 02481