

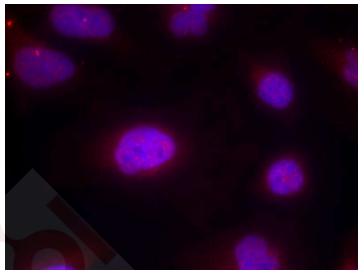
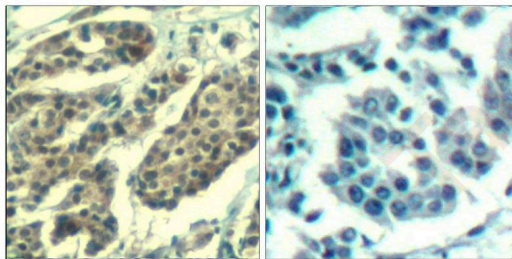
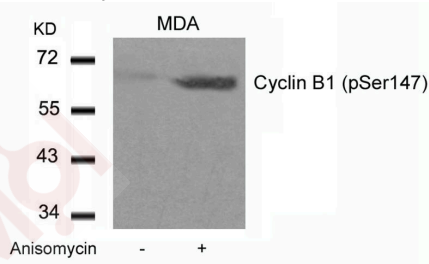
Anti-Phospho-CCNB1 (Ser147) Polyclonal Antibody

Product Details

Ig Type:	IgG
Reactivity:	Human
Conjugation:	Unconjugated
Purification:	Antibodies were produced by immunizing rabbits with synthetic phosphopeptide and KLH conjugates. Antibodies were purified by affinity-chromatography using epitope-specific phosphopeptide. Non-phospho specific antibodies were removed by chromatography using non-phosphopeptide.

Applications

- Verified Activity:
- Western blot analysis of extracts from MDA cells untreated or treated with Anisomycin using Cyclin B1 (phospho-Ser147) Antibody TMAC-01034.
 - Immunohistochemical analysis of paraffin-embedded human breast carcinoma tissue using Cyclin B1 (Phospho-Ser147) Antibody TMAC-01034 (left) or the same antibody preincubated with blocking peptide (right).
 - Immunofluorescence staining of methanol-fixed Hela cells using Cyclin B1 (phospho-Ser147) Antibody TMAC-01034.



Application: IF,IHC,WB

Properties

Stability & Storage: Store at 2°C-8°C for 1 month. Store at -20°C or -80°C for 12 months. Avoid repeated freeze-thaw cycles.

Shipping: Shipping with blue ice.

Antigen Details

Immunogen: Peptide sequence around phosphorylation site of Serine 147 (A-F-S(p)-D-V) derived from Human Cyclin B1

Antigen Species: human

Uniprot ID: P14635

Synonyms: p-CCNB1 (S147);CCNB1 (p-S147);p-CCNB1 (Ser147);CCNB1 (p-Ser147)

Research Background

The protein encoded by Cyclin B1 is a regulatory protein involved in mitosis. The gene product complexes with p34 (cdc2) to form the maturation-promoting factor (MPF). Two alternative transcripts have been found, a constitutively expressed transcript and a cell cycle-regulated transcript, that is expressed predominantly during G2/M phase. The different transcripts result from the use of alternate transcription initiation sites.

Inhibitor · Natural Compounds · Compound Libraries · Recombinant Proteins

This product is for Research Use Only · Not for Human or Veterinary or Therapeutic Use

Tel: 781-999-4286 E_mail: info@targetmol.com Address: 34 Washington Street, Wellesley Hills, MA 02481