

Anti-Phospho-DPYSL2 (Thr509) Polyclonal Antibody

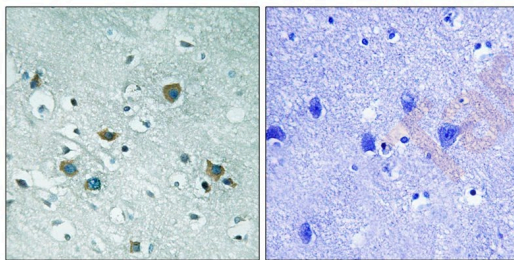
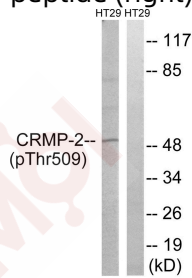
Product Details

Ig Type:	IgG
Reactivity:	Human
Conjugation:	Unconjugated
Molecular Weight:	Actual: 50 kDa.
Purification:	Antibodies were produced by immunizing rabbits with synthetic phosphopeptide and KLH conjugates. Antibodies were purified by affinity-chromatography using epitope-specific phosphopeptide. Non-phospho specific antibodies were removed by chromatography using non-phosphopeptide.

Applications

Verified Activity:

1. Western blot analysis of extracts from HT-29 cells treated with heat shock using CRMP-2 (Phospho-Thr509) Antibody TMAC-00986. The lane on the right is treated with the antigen-specific peptide.
2. Immunohistochemical analysis of paraffin-embedded human brain tissue using CRMP-2 (Phospho-Thr509) antibody TMAC-00986 (left) or the same antibody preincubated with blocking peptide (right).



Application:	IHC,WB
Recommended	WB: 1:500-1000; IHC: 1:50-100

Properties

Stability & Storage:	Store at -20°C or -80°C for 12 months. Avoid repeated freeze-thaw cycles.
Shipping:	Shipping with blue ice.

Antigen Details

Immunogen:	Peptide sequence around phosphorylation site of threonine 509 (S-V-T(p)-P-K) derived from Human CRMP-2
Antigen Species:	human
Uniprot ID:	Q16555
Synonyms:	DPYSL2 (p-Thr509);p-DPYSL2 (T509);p-DPYSL2 (Thr509);DPYSL2 (p-T509)

Research Background

CRMP-2 is an enzyme with dihydropyrimidinase activity. Plays a role in RhoA-dependent signaling, through interaction with and regulation of Rho kinase. Plays a role in neurogenesis. Aberrantly expressed in fetal Down syndrome brain.

Inhibitor · Natural Compounds · Compound Libraries · Recombinant Proteins

This product is for Research Use Only · Not for Human or Veterinary or Therapeutic Use

Tel:781-999-4286 E_mail:info@targetmol.com Address:34 Washington Street,Wellesley Hills,MA 02481