

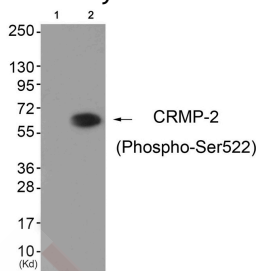
## Anti-Phospho-DPYSL2 (Ser522) Polyclonal Antibody

### Product Details

Ig Type:	IgG
Reactivity:	Human
Conjugation:	Unconjugated
Molecular Weight:	Actual: 62 kDa.
Purification:	Antibodies were produced by immunizing rabbits with synthetic phosphopeptide and KLH conjugates. Antibodies were purified by affinity-chromatography using epitope-specific phosphopeptide. Non-phospho specific antibodies were removed by chromatography using non-phosphopeptide.

### Applications

Verified Activity: 1. Western blot analysis of extracts from HuvEc cells (Lane 2), using CRMP-2 (Phospho-Ser522) Antibody TMAC-00985. The lane on the left is treated with antigen-specific peptide.



Application:	WB
Recommended	WB: 1:500-1000

### Properties

Stability & Storage:	Store at -20°C or -80°C for 12 months. Avoid repeated freeze-thaw cycles.
Shipping:	Shipping with blue ice.

### Antigen Details

Immunogen:	Peptide sequence around phosphorylation site of Serine 522(K-T-S(p)-P-A) derived from Human CRMP-2
Antigen Species:	human
Uniprot ID:	Q16555
Synonyms:	p-DPYSL2 (S522);DPYSL2 (p-Ser522);p-DPYSL2 (Ser522);DPYSL2 (p-S522)

### Research Background

CRMP-2 is an enzyme with dihydropyrimidinase activity. Plays a role in RhoA-dependent signaling, through interaction with and regulation of Rho kinase. Plays a role in neurogenesis. Aberrantly expressed in fetal Down syndrome brain.

**Inhibitor · Natural Compounds · Compound Libraries · Recombinant Proteins**

This product is for Research Use Only · Not for Human or Veterinary or Therapeutic Use

Tel:781-999-4286 E\_mail:info@targetmol.com Address:34 Washington Street,Wellesley Hills,MA 02481