

## Anti-XPO1 Antibody (2H608)

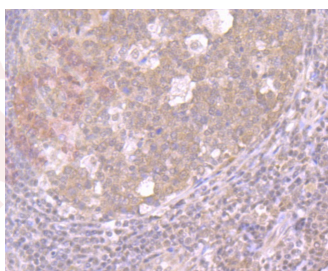
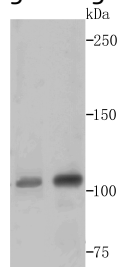
### Product Details

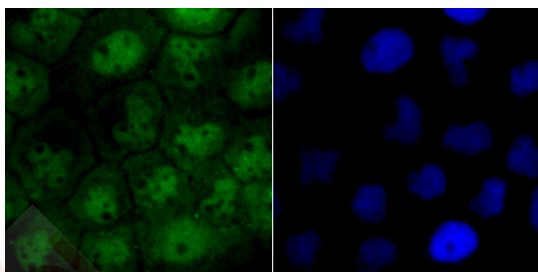
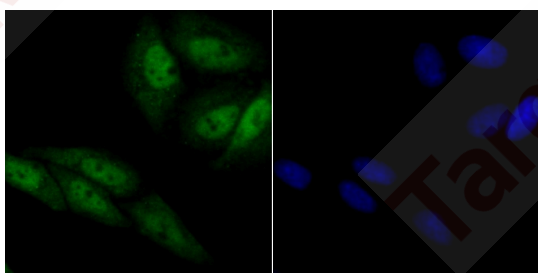
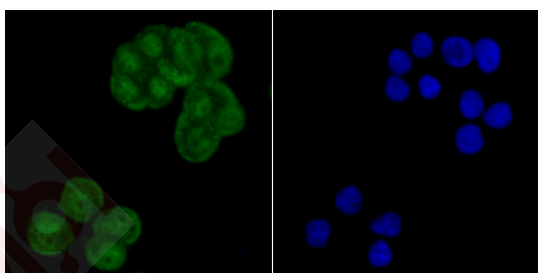
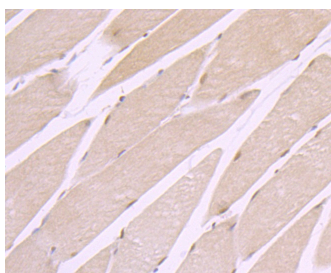
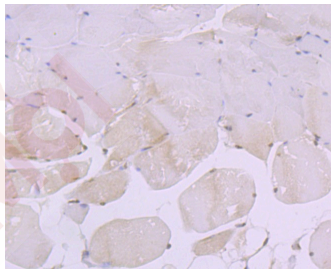
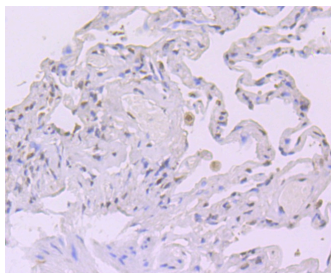
Ig Type:	IgG
Reactivity:	Human,Mouse,Rat
Conjugation:	Unconjugated
Molecular Weight:	Theoretical: 123 kDa.
Clone:	2H608
Purification:	ProA affinity purified

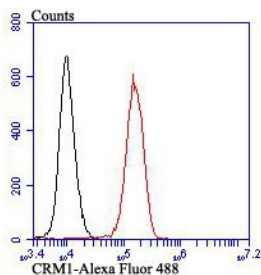
### Applications

1. Western blot analysis of CRM1 on 293T and Hela cell lysates using anti-CRM1 antibody at 1/500 dilution.
2. Immunohistochemical analysis of paraffin-embedded human tonsil tissue using anti-CRM1 antibody. Counter stained with hematoxylin.
3. Immunohistochemical analysis of paraffin-embedded human lung cancer tissue using anti-CRM1 antibody. Counter stained with hematoxylin.
4. Immunohistochemical analysis of paraffin-embedded mouse skeletal muscle tissue using anti-CRM1 antibody. Counter stained with hematoxylin.
5. Immunohistochemical analysis of paraffin-embedded rat skeletal muscle tissue using anti-CRM1 antibody. Counter stained with hematoxylin.
6. ICC staining CRM1 in LOVO cells (green). The nuclear counter stain is DAPI (blue). Cells were fixed in paraformaldehyde, permeabilised with 0.25% Triton X100/PBS.
7. ICC staining CRM1 in SiHa cells (green). The nuclear counter stain is DAPI (blue). Cells were fixed in paraformaldehyde, permeabilised with 0.25% Triton X100/PBS.
8. ICC staining CRM1 in A431 cells (green). The nuclear counter stain is DAPI (blue). Cells were fixed in paraformaldehyde, permeabilised with 0.25% Triton X100/PBS.
9. Flow cytometric analysis of K562 cells with CRM1 antibody at 1/100 dilution (red) compared with an unlabelled control (cells without incubation with primary antibody; black). Alexa Fluor 488-conjugated goat anti rabbit IgG was used as the secondary antibody.

Verified Activity:







Application: FCM,ICC,IF,IHC,WB

Recommended WB: 1:500; IHC: 1:50-100; ICC: 1:50-200; FCM: 1:50-100

### Properties

Stability & Storage: Store at -20°C or -80°C for 12 months. Avoid repeated freeze-thaw cycles.

Shipping: Shipping with blue ice.

### Antigen Details

Immunogen: Recombinant Protein: within C terminal human CRM1

Antigen Species: human

Uniprot ID: O14980

Synonyms: Exportin-1;Chromosome region maintenance 1 protein homolog;CRM1;XPO 1;Exp1

### Research Background

Protein transport across the nucleus is a selective, multistep process involving several cytoplasmic factors. Proteins must be recognized as import substrates, dock at the nuclear pore complex and translocate across the nuclear envelope in an ATP-dependent fashion. Two cytosolic factors centrally involved in the recognition and docking process are the karyopherin alpha1 and karyopherin beta1 subunits. p62 glycoprotein is a nucleoporin that is not only involved in the nuclear import of proteins, but also the export of nascent mRNA strands. NTF2 (nuclear transport factor 2) interacts with nucleoporin p62 as a homodimer composed of two monomers, and may be an obligate component of functional p62. CRM1 has been shown to be an export receptor for leucine-rich proteins that contain the nuclear export signal (NES).

**Inhibitor · Natural Compounds · Compound Libraries · Recombinant Proteins**

This product is for Research Use Only · Not for Human or Veterinary or Therapeutic Use

Tel:781-999-4286 E\_mail:info@targetmol.com Address:34 Washington Street,Wellesley Hills,MA 02481