

Anti-c-Rel Antibody (9I816)

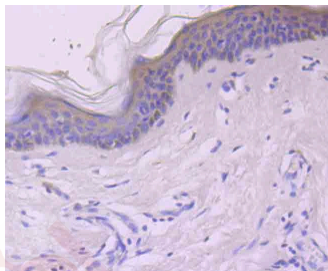
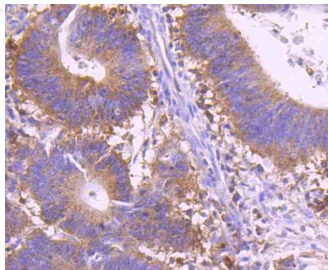
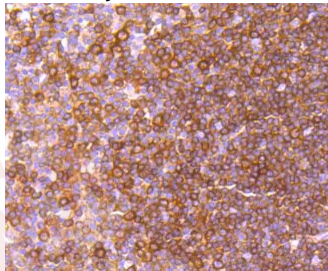
Product Details

Ig Type:	IgG
Reactivity:	Human
Conjugation:	Unconjugated
Molecular Weight:	Theoretical: 68 kDa.
Clone:	9I816
Purification:	ProA affinity purified

Applications

Verified Activity:

1. Immunohistochemical analysis of paraffin-embedded human tonsil tissue using anti-c-Rel antibody. Counter stained with hematoxylin.
2. Immunohistochemical analysis of paraffin-embedded human colon cancer tissue using anti-c-Rel antibody. Counter stained with hematoxylin.
3. Immunohistochemical analysis of paraffin-embedded human skin tissue using anti-c-Rel antibody. Counter stained with hematoxylin.



Application:	IHC,IP,WB
Recommended	WB: 1:500; IHC: 1:50-200

Properties

Stability & Storage: Store at -20°C or -80°C for 12 months. Avoid repeated freeze-thaw cycles.

Shipping: Shipping with blue ice.

Antigen Details

Immunogen: Recombinant Protein

Uniprot ID: Q04864

Synonyms: Proto-oncogene c-Rel;REL

Research Background

c-Rel is the cellular cognate of v-Rel, the avian reticuloendotheliosis virus strain T transforming gene. v-Rel encodes a phosphoprotein that is located in the cytoplasm of transformed spleen cells and in the nucleus of non-transformed fibroblasts, in contrast to the c-Rel protein, which is cytoplasmic. c-Rel has been shown to represent a constituent of the κ B site binding transcription factor NF κ B, which plays a crucial role in the expression of immunoglobulin κ light chain gene. In contrast to c-Rel, v-Rel is truncated in its C-terminal transactivation domain and does not appear to function as a transcriptional transactivator. It has thus been postulated that v-Rel may interfere with the normal transcription of NF κ B regulated genes and thus cause transformation by a mechanism analogous to v-ErbA, which binds to the thyroid hormone-responsive region in certain erythroid genes needed for differentiation, but cannot be activated by thyroid hormone.

Inhibitor · Natural Compounds · Compound Libraries · Recombinant Proteins

This product is for Research Use Only · Not for Human or Veterinary or Therapeutic Use

Tel:781-999-4286 E_mail:info@targetmol.com Address:34 Washington Street,Wellesley Hills,MA 02481