

Anti-CREB1 Antibody (5D605)

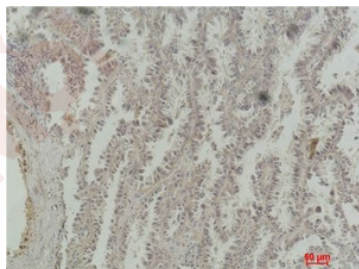
Product Details

Reactivity:	Human,Mouse
Conjugation:	Unconjugated
Molecular Weight:	Actual: 43 kDa.
Clone:	5D605
Purification:	The antibody was affinity-purified from antiserum by affinity-chromatography

Applications

Verified Activity:

1. Western blot analysis of 1) A431, 2) 3T3 using CREB-1 Monoclonal Antibody.
2. Immunohistochemical analysis of paraffin-embedded Human Lung Carcinoma using CREB-1 Monoclonal Antibody.



Application:	IHC,WB
Recommended	WB: 1:500-1000; IHC: 1:100-200

Properties

Stability & Storage:	Store at -20°C or -80°C for 12 months. Avoid repeated freeze-thaw cycles.
Shipping:	Shipping with blue ice.

Antigen Details

Immunogen: Recombinant Protein
Uniprot ID: P16220
Synonyms: CREB1;cAMP-responsive element-binding protein 1;CREB-1;Cyclic AMP-responsive element-binding protein 1

Inhibitor · Natural Compounds · Compound Libraries · Recombinant Proteins

This product is for Research Use Only· Not for Human or Veterinary or Therapeutic Use

Tel:781-999-4286 E_mail:info@targetmol.com Address:34 Washington Street,Wellesley Hills,MA 02481